

\$1,299,000 - 1510 Bellaire Drive, Austin

MLS® #1652425

\$1,299,000

3 Bedroom, 3.00 Bathroom, 1,953 sqft
Residential on 0.24 Acres

Elmhurst Heights Sec 01, Austin, TX

Nestled in the sought-after neighborhood of East Travis Heights, this property showcases the brilliance of the award-winning Kelly Design Group. Its prime location places it just minutes from Lady Bird Lake, Rainey Street, East Austin, Downtown, and all that Central Austin has to offer, making it an ideal residence for those seeking a blend of urban convenience and tranquil living.

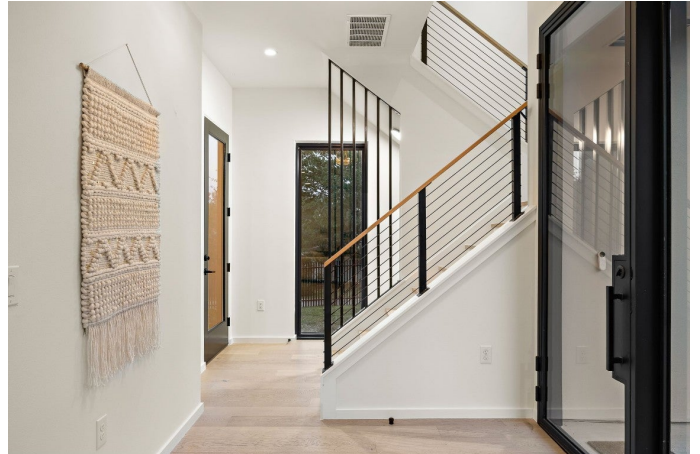
The modern interior is defined by a state-of-the-art kitchen featuring a stunning waterfall island. An open floor plan unites the living, dining, and kitchen areas, creating a spacious and inviting environment. Westin glass sliders in the living room connect to the outdoors and a large private balcony off the primary suite offers a peaceful retreat and views above the treetops.

Outside, a beautiful pool complements the easy-to-maintain back lawn on a corner lot. With its luxurious features, contemporary design, and unparalleled proximity to the lake, dining, entertainment, and more, this property truly epitomizes the essence of modern living in the heart of Austin.

Built in 2023

Essential Information

ListingFeed	abor_vow
MLS® #	1652425



List Price	\$1,299,000
Sale Price	\$1,225,000
Sale Date	December 8th, 2023
Bedrooms	3
Bathrooms	3.00
Full Baths	3
Square Footage	1,953
Acres	0.24
Year Built	2023
Type	Residential
Sub-Type	Condominium
Status	Closed

Community Information

Address	1510 Bellaire Drive
Subdivision	Elmhurst Heights Sec 01
City	Austin
County	Travis
State	TX
Zip Code	78741

Amenities

Utilities	Cable Available, Electricity Available, High Speed Internet Available, Phone Available, Sewer Available, Water Available
Features	None
Parking	Attached Carport
View	Hills
Waterfront	None
Has Pool	Yes

Interior

Interior	Tile, Wood
Appliances	Built-In Electric Oven, Built-In Refrigerator, Double Oven, Dishwasher, Electric Cooktop, Electric Oven, Disposal, Oven, Plumbed For Ice Maker, Stainless Steel Appliance(s)
Heating	Central
Cooling	Central Air, Ceiling Fan(s)
# of Stories	2
Stories	Two

Exterior

Exterior Features	Balcony, Exterior Steps, Private Yard
Lot Description	Corner Lot, Landscaped, Native Plants, Private, Trees Large Size, Trees Medium Size, Views, Xeriscape
Windows	Display Window(s)
Roof	Metal
Construction	HardiPlank Type, Concrete
Foundation	Slab

School Information

District	Austin ISD
Elementary	Travis Hts
Middle	Lively
High	Travis