

\$1,300,000 - 568 Ash Juniper Dr, New Braunfels

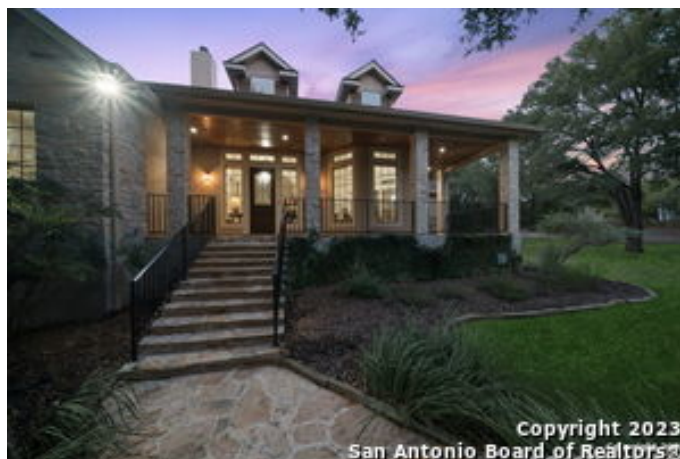
MLS® #1721652

\$1,300,000

4 Bedroom, 3.00 Bathroom, 3,570 sqft
Residential on 7.74 Acres

River Chase, New Braunfels, TX

Stunning parklike settings on 7.74 acres in River Chase on two lots. This home sits back off the road with a large, pebble circle drive with the most spectacular grand oak canopies to welcome you. Beautifully landscaped, sprinkler system, Koi pond with a waterfall, outdoor kitchen, decking, and stunning landscape lighting makes the grounds a real show stopper. Multiple dining areas inside and out, an oversized closet, office and a bonus room. There is a butlers pantry, walk-in pantry, gas cooking, dual kitchen islands. Soaring ceilings, impressive rock fireplace, stained glass accents, wood floors, 4 bedrooms, two and a half baths and a two car garage. There is a reverse osmosis/water softener in the garage that will convey. River Chase has the best amenities with a 58 acre river park with Guadalupe River access. HOA fees are only \$400 per year (\$200 per lot) with pool, trails, club house, fitness center, sports courts and playgrounds and river access all within 10 minutes of New Braunfels, Gruene and Canyon Lake.



Built in 2001

Essential Information

ListingFeed	sabor_vow_sold
MLS® #	1721652
List Price	\$1,300,000
Sale Price	\$1,250,000

Sale Date	April 17th, 2024
Bedrooms	4
Bathrooms	3.00
Full Baths	2
Half Baths	1
Square Footage	3,570
Acres	7.74
Year Built	2001
Type	Residential
Sub-Type	Single Family Detached
Style	One Story, Texas Hill Country
Status	Sold

Community Information

Address	568 Ash Juniper Dr
Subdivision	River Chase
City	New Braunfels
County	Comal
State	TX
Zip Code	78132-3555

Amenities

Amenities	Park/Playground, Bike Trails, Clubhouse, Sports Court, Lake/River Park, Pool, Tennis, Jogging Trails, Waterfront Access
Parking	Two Car Garage
Pool	Other

Interior

Interior	One Living Area, Utility Room Inside, High Ceilings, Open Floor Plan, Walk in Closets, Two Eating Areas, All Bedrooms Downstairs, Attic - Pull Down Stairs, Eat-In Kitchen, Island Kitchen, Laundry Room, Pull Down Storage, Separate Dining Room, Study/Library, Walk-In Pantry
Appliances	Ceiling Fans, Washer Connection, Dryer Connection, Stove/Range, Dishwasher, Pre-Wired for Security, Garage Door Opener, Solid Counter Tops, Built-In Oven, Chandelier, Double Ovens, Gas Cooking, Gas Water Heater, Ice Maker Connection, Private Garbage Service, Water Softener (owned)
Heating	2 Units
Cooling	Two Central
Fireplace	Yes

# of Fireplaces	1
Fireplaces	One
# of Stories	1
Stories	1

Exterior

Exterior	4 Sides Masonry, Stone/Rock
Exterior Features	Mature Trees, Bar-B-Que Pit/Grill, Outdoor Kitchen, Special Yard Lighting
Lot Description	5 - 14 Acres, County Vlew, Corner, Horses Allowed, Mature Trees (ext feat), Partially Wooded, Secluded, Water Access
Roof	Composition
Construction	Pre-Owned
Foundation	Slab

School Information

District	Comal ISD
Elementary	HOFFMANN
Middle	Church Hill
High	Canyon