

\$1,349,900 - 910 Bristol Creek Bend, Spicewood

MLS® #1795282

\$1,349,900

5 Bedroom, 6.00 Bathroom, 4,561 sqft
Residential on 0.27 Acres

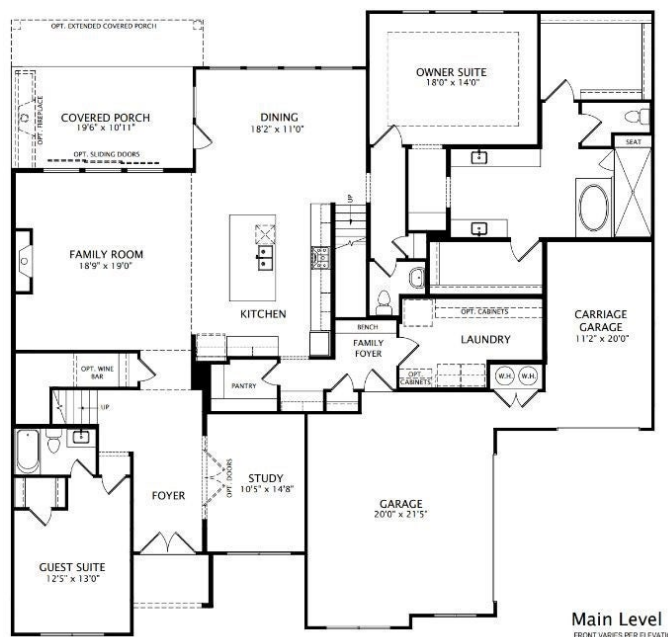
Rough Hollow Las Brisas, Spicewood, TX

The Wilshire is a plan with everything you need and want in a home. Spaciousness abounds in the main level's family room, kitchen and dining area. A covered porch further extends the entertainment zones, while a study and guest suite adjacent to the foyer offer a peaceful respite. Did we mention the luxurious primary suite and bath on the main level? Its dual closets also allow plenty of storage space. Upstairs, a game room provides family fun and has a functional unfinished storage area for holiday decor and such. Three additional bedrooms complete the second level - all with their own bathroom and walk-in closet.

Built in 2024

Essential Information

ListingFeed	abor_vow
MLS® #	1795282
List Price	\$1,349,900
Sale Price	\$1,248,000
Sale Date	March 28th, 2024
Bedrooms	5
Bathrooms	6.00
Full Baths	5
Half Baths	1
Square Footage	4,561
Acres	0.27
Year Built	2024



Type	Residential
Sub-Type	Single Family Residence
Status	Closed

Community Information

Address	910 Bristol Creek Bend
Subdivision	Rough Hollow Las Brisas
City	Spicewood
County	Travis
State	TX
Zip Code	78669

Amenities

Utilities	Cable Available, Electricity Connected, Propane, Phone Available, Sewer Connected, Water Connected, Underground Utilities
Features	Common Grounds/Area, Community Mailbox, Curbs, Fitness Center, Lake, Pool, Restaurant, Sport Court(s), Sidewalks, Trails/Paths
Parking	Attached, Garage Faces Front, Garage Faces Side
# of Garages	3
Waterfront	None

Interior

Interior	Carpet, Tile, Wood
Appliances	Built-In Oven, Dishwasher, Gas Cooktop, Disposal, Microwave, Vented Exhaust Fan
Heating	Central, Propane, Zoned
Cooling	Central Air, Zoned
Fireplace	Yes
# of Fireplaces	1
Fireplaces	Family Room
# of Stories	2
Stories	Two

Exterior

Exterior Features	Rain Gutters
Lot Description	Sprinklers Automatic, Sprinklers In Ground, Trees Small Size
Windows	See Remarks
Roof	Composition, Shingle
Construction	Masonry, Stone, Stucco

Foundation Slab

School Information

District Lake Travis ISD

Elementary Rough Hollow

Middle Lake Travis

High Lake Travis