

\$1,912,500 - 3990 Jochen Lane, Schulenburg

MLS® #2005418

\$1,912,500

3 Bedroom, 2.00 Bathroom, 1,876 sqft
Farms and Ranches on 175.95 Acres

Salathiel F Knight Abs 62, Schulenburg, TX

Looking for a nice site-built home on 175 +/- acres, perfectly nestled in the beautiful scenic Freyburg area, with wooded areas, improved pastures, native open prairie, a live creek, abundant wildlife all around including turkey and deer, and views of the rolling countryside? Have you ever had the thought of owning a property with an Artesian water well that creates a place of tranquility and flows like a river in your backyard? Look no further! According to one water well expert this Artesian well is the best flowing in Fayette County. This tract is agricultural exempt and has an excellent mix of pastures and woods to accommodate having a large cattle operation along with plenty of space for wildlife for the hunting enthusiast. There is a creek that flows through the property into Coldwater Creek. Improvements include an updated/remodeled 1850 SF 3 bed 2 bath home with covered front and back porches, two barns, well house, an outside fireplace/fire pit entertaining area, along with an old farmhouse located in the southwest corner of the property. The topography allows for the making of a nice sized lake. Property is being leased at present time for cattle and hay.

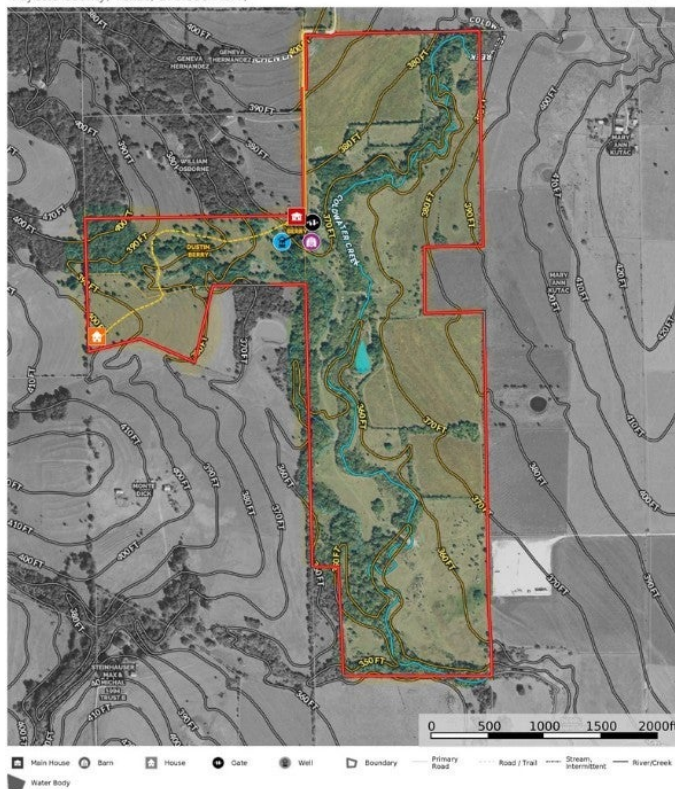
Built in 1980

Essential Information

ListingFeed abor_vow
MLS® # 2005418

3990 Jochen Lane, Schulenburg, TX 78956 - 175.953 Acres
Fayette County, Texas, 175.953 AC +/-

BUBELA
REAL ESTATE



Chip Bubela
P: 979-221-4679 www.BubelaRealEstate.com 714 Lyons Ave, Schulenburg, TX 78956

The information contained herein was obtained from sources deemed to be reliable. No warranty is made as to the completeness or accuracy thereof.

List Price	\$1,912,500
Sale Price	\$1,912,500
Sale Date	March 23rd, 2022
Bedrooms	3
Bathrooms	2.00
Full Baths	2
Square Footage	1,876
Acres	175.95
Year Built	1980
Type	Farms and Ranches
Sub-Type	Single Family Residence
Status	Closed

Community Information

Address	3990 Jochen Lane
Subdivision	Salathiel F Knight Abs 62
City	Schulenburg
County	Fayette
State	TX
Zip Code	78956

Amenities

Utilities	Electricity Connected, Propane
Features	None
Parking	Door-Multi, Garage
# of Garages	1
View	City, Pasture, Trees/Woods
Waterfront	Creek, Pond, Stream

Interior

Interior	Tile, Wood
Appliances	Dishwasher, Electric Water Heater, Gas Range, Stainless Steel Appliance(s)
Heating	Central
Cooling	Central Air
Fireplace	Yes
# of Fireplaces	1
# of Stories	1
Stories	One

Exterior

Exterior Features	Exterior Steps, Private Yard, Fire Pit
Lot Description	Agricultural, Moderate Trees, Trees Large Size, Trees Medium Size, Views, Rolling Slope
Windows	Window Treatments
Roof	Metal
Construction	HardiPlank Type, Masonry
Foundation	Pillar/Post/Pier

School Information

District	Schulenburg ISD
Elementary	Schulenburg
Middle	Schulenburg Secondary
High	Schulenburg Secondar