

\$3,175,000 - 5910 Silver Luna Way, Austin

MLS® #2168486

\$3,175,000

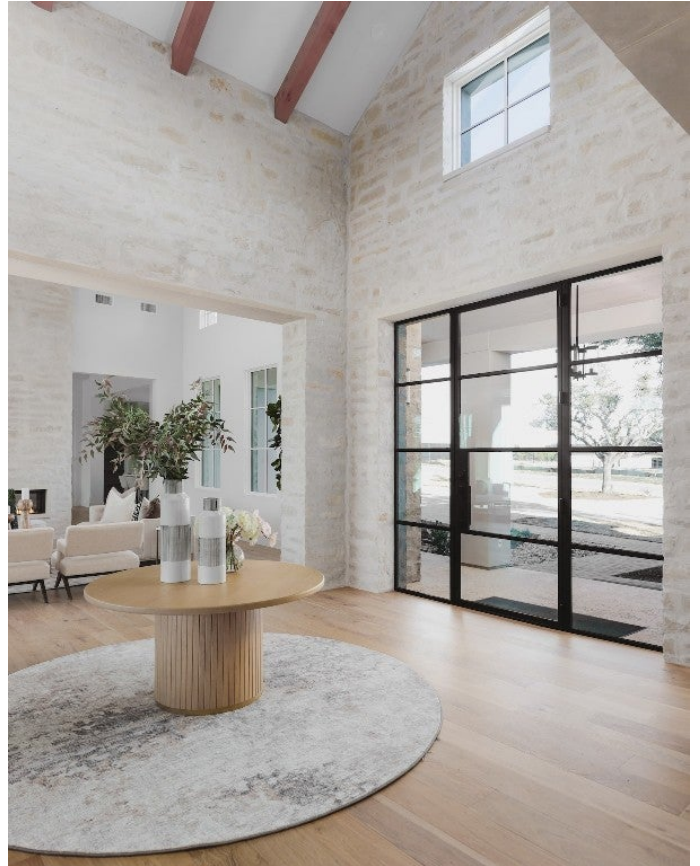
6 Bedroom, 7.00 Bathroom, 4,746 sqft
Residential on 0.71 Acres

Madrone Canyon, Austin, TX

Indulge in the epitome of European country side living within the exclusive gates of Madrone Canyon at Chateau Madrone. This exquisite SINGLE STORY home, crafted by the esteemed Ames Design Build, is a masterpiece of open design, meticulous construction, and contemporary elegance.

Upon entering, a grand 2-story entry welcomes you with 18' cathedral beamed ceilings, setting the tone for the luxurious interiors. The 6 bed, 6.5 bath interior is thoughtfully designed with finishes such as white oak wood floors, wood beams throughout, and buff lueder stone with an intricate over-grout finish. The formal living room features a 2-story natural stone double fireplace that seamlessly connects to the dining room. 10â€™™ Western slider doors line the living spaces creating a seamless indoor/outdoor living experience.

The kitchen is a culinary haven with Wolf & Sub-Zero appliances, an oversized island, double ovens, and double dishwashers and opens to the dining and secondary living space, creating a effortless flow. Further, the home enjoys a large utility room with plumbing for a fridge and ample storage. Attached to the utility room is an Amazon package drop area, ensuring peace of mind from inclement weather. All the secondary bedrooms enjoy en-suite bathrooms, and their own unique and luxurious features.



The primary suite is incredibly spacious, and enjoys elevated features like beamed cathedral ceilings, large windows looking out to the pool, a private patio, and a large primary bath. The primary bath was exquisitely designed, with a separate vanity, soaking tub, gold accents, and a walk-in closet. Enjoy outdoor living with ample entertainment space adorned by mature oak trees, a beautiful pool & spa combination. The 3-car garage with electrical for a charging station and plumbing closet for a home water filtration system. This home is a perfect blend of luxurious living, natural features and functional design.

Built in 2024

Essential Information

ListingFeed	abor_vow
MLS® #	2168486
List Price	\$3,175,000
Sale Price	\$3,225,000
Sale Date	April 4th, 2024
Bedrooms	6
Bathrooms	7.00
Full Baths	6
Half Baths	1
Square Footage	4,746
Acres	0.71
Year Built	2024
Type	Residential
Sub-Type	Single Family Residence
Status	Closed

Community Information

Address	5910 Silver Luna Way
Subdivision	Madrone Canyon
City	Austin
County	Travis
State	TX

Zip Code 78738

Amenities

Utilities Electricity Connected, Natural Gas Connected, Sewer Connected, Water Connected, Underground Utilities

Features Community Mailbox, Gated, Trails/Paths

Parking Attached, Door-Multi, Driveway, Garage, Oversized, Paver Block, Garage Faces Side, Side By Side, Storage

of Garages 3

Garages Garage Door Opener

View Hills, Neighborhood, Trees/Woods

Waterfront None

Has Pool Yes

Interior

Interior Tile, Wood

Appliances Built-In Range, Built-In Gas Oven, Built-In Oven, Built-In Refrigerator, Dishwasher, Built-In Freezer, Disposal, Gas Range, Microwave, Range, Refrigerator, See Remarks, Stainless Steel Appliance(s), Tankless Water Heater, Vented Exhaust Fan

Heating Central, Natural Gas

Cooling Central Air, Ceiling Fan(s), Zoned

Fireplace Yes

of Fireplaces 1

Fireplaces Dining Room, Double Sided, Gas, Great Room, Stone

of Stories 1

Stories One

Exterior

Exterior Features Gas Grill, Lighting, No Exterior Steps, Outdoor Grill, Private Yard, Rain Gutters

Lot Description Back Yard, Corner Lot, Front Yard, Sprinklers In Rear, Sprinklers In Front, Level, Moderate Trees, Private, Sprinkler - Rain Sensor, Sprinklers Automatic, Sprinklers In Ground, Trees Large Size, Trees Small Size

Windows Double Pane Windows, Insulated Windows

Roof Metal

Construction Masonry, Stone Veneer, Spray Foam Insulation, Stucco

Foundation Slab

School Information

District	Lake Travis ISD
Elementary	Bee Cave
Middle	Bee Cave Middle School
High	Lake Travis