

\$1,150 - 912 Sugaree Avenue B, Austin

MLS® #2453199

\$1,150

0 Bedroom, 1.00 Bathroom, 450 sqft
Rental on 0.09 Acres

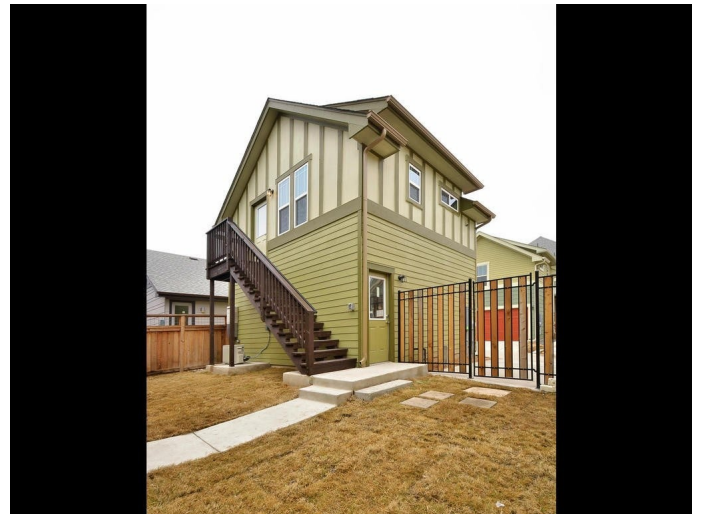
Crestview Station, Austin, TX

ADORABLE Crestview Station garage apartment (NO Attached walls) with contemporary finishes throughout! This fully open living space boasts a stackable washer/dryer in the unit for your convenience. Its prime location offers easy access to local Crestview/Northloop hotspots and the Metro Rail, making downtown commuting a breeze. This all-in-one abode will be available on 4/8/2024, ready for you to call it home! As a tenant, you'll enjoy additional benefits including, electricity, water, and trash services, all conveniently included. The tenant will reimburse the owner \$50 monthly for electricity, water, and trash services. Tenant responsible for internet services. We understand that pets are part of the family, so we warmly welcome one pet with breed and size restrictions. To ensure the comfort of your furry friend, we require a \$400 pet deposit and a \$20 non-refundable third-party pet application fee. Applying for this fantastic opportunity is easy and can be done online. Don't miss out on this amazing Crestview Station garage apartment.

Built in 2013

Essential Information

ListingFeed	abor_vow
MLS® #	2453199
List Price	\$1,150



Sale Price	\$1,150
Sale Date	March 19th, 2024
Bathrooms	1.00
Full Baths	1
Square Footage	450
Acres	0.09
Year Built	2013
Type	Rental
Sub-Type	Other
Status	Closed

Community Information

Address	912 Sugaree Avenue B
Subdivision	Crestview Station
City	Austin
County	Travis
State	TX
Zip Code	78757

Amenities

Utilities	Electricity Connected, Natural Gas Connected, Sewer Connected, Water Connected
Features	Curbs
Parking	Assigned
View	None
Waterfront	None

Interior

Interior	Laminate
Appliances	Washer/Dryer Stacked, Dishwasher, Free-Standing Range, Gas Range, Gas Water Heater, Microwave, Refrigerator
Heating	Central
Cooling	Central Air
Fireplaces	None
# of Stories	1
Stories	One

Exterior

Exterior Features	Exterior Steps
-------------------	----------------

Lot Description	Alley, Sprinklers Automatic, Trees Small Size
Windows	Window Treatments
Roof	Composition
Construction	HardiPlank Type
Foundation	Slab

School Information

District	Austin ISD
Elementary	Brentwood
Middle	Lamar (Austin ISD)
High	McCallum