

\$1,400,000 - 2413 Enfield, Austin

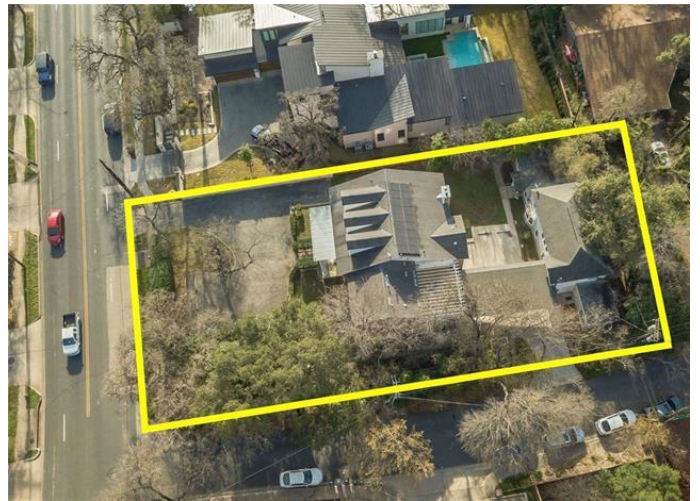
MLS® #3342055

\$1,400,000

Bedroom, Bathroom, 18,964 sqft
Lots and Acreage on 0.44 Acres

Westfield A, Austin, TX

Rare .43 acre estate property in heart of Central Austin: buy/hold/move-in or redevelop. Ideal opportunity to create a private compound behind stone walls with main and guest houses up to 7,585 sqft. Could have Possum Trot address. Or subdivide into THREE .14 acres lots or TWO .21 acre lots. Duplex lot supports 2 units with up to 3,750 sqft per side. See video & aerial footage in virtual tour; see ML# 1034892 & 5589189.



Essential Information

ListingFeed	abor_vow_sold
MLS® #	3342055
List Price	\$1,400,000
Sale Price	\$1,400,000
Sale Date	September 20th, 2019
Square Footage	18,964
Acres	0.44
Type	Lots and Acreage
Sub-Type	Single Lot
Status	Sold

Community Information

Address	2413 Enfield
Subdivision	Westfield A
City	Austin
County	Travis
State	TX

Zip Code 78703

Amenities

Utilities Electricity Available, Natural Gas Available

View No View

Exterior

Lot Description Corner

School Information

District Austin ISD

Elementary Casis

Middle O Henry

High Austin

Additional Information

Zoning Yes