

\$1,099,900 - 6208 Sontag Drive, Austin

MLS® #3722345

\$1,099,900

4 Bedroom, 3.00 Bathroom, 2,895 sqft
Residential on 0.18 Acres

Sweetwater, Austin, TX

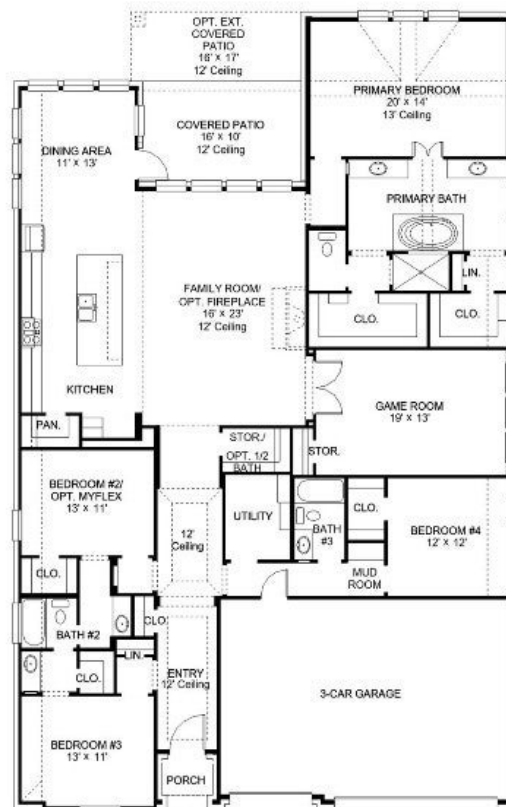
PERRY HOMES NEW CONSTRUCTION!

Extended entry leads to open family room, kitchen and dining area. Family room features wall of windows. Kitchen hosts island with built-in seating space. Game room with French doors just off family room. Secluded primary suite. Dual vanities, garden tub, separate glass-enclosed shower and two large walk-in closets in primary bath. A Hollywood bath, high ceilings, large windows and abundant closet space add to this one-story design. Covered backyard patio. Mud room off three-car garage.

Built in 2023

Essential Information

ListingFeed	abor_vow
MLS® #	3722345
List Price	\$1,099,900
Sale Price	\$1,099,295
Sale Date	October 30th, 2023
Bedrooms	4
Bathrooms	3.00
Full Baths	3
Square Footage	2,895
Acres	0.18
Year Built	2023
Type	Residential
Sub-Type	Single Family Residence
Status	Closed



Community Information

Address	6208 Sontag Drive
Subdivision	Sweetwater
City	Austin
County	Travis
State	TX
Zip Code	78738

Amenities

Utilities	Underground Utilities
Features	Barbecue, Common Grounds/Area, Clubhouse, Community Mailbox, Dog Park, Fitness Center, Playground, Pool, Sport Court(s), Trails/Paths
Parking	Attached, Garage Faces Front, Garage, Tandem
# of Garages	3
Garages	Garage Door Opener
View	Park/Greenbelt, Hills
Waterfront	None

Interior

Interior	Carpet, Tile
Appliances	Built-In Oven, Dishwasher, ENERGY STAR Qualified Appliances, Gas Cooktop, Disposal, Microwave, Tankless Water Heater
Heating	Natural Gas
Cooling	Central Air
Fireplaces	None
# of Stories	1
Stories	One

Exterior

Exterior Features	Exterior Steps, Private Yard, Rain Gutters
Lot Description	Backs to Greenbelt/Park
Windows	Double Pane Windows
Roof	Composition
Construction	Masonry, Stone, Stucco
Foundation	Slab

School Information

District	Lake Travis ISD
Elementary	Rough Hollow

Middle
High

Lake Travis
Lake Travis