

\$1,182,900 - 6216 Sontag Drive, Austin

MLS® #3985457

\$1,182,900

5 Bedroom, 4.00 Bathroom, 3,593 sqft
Residential on 0.17 Acres

Sweetwater, Austin, TX

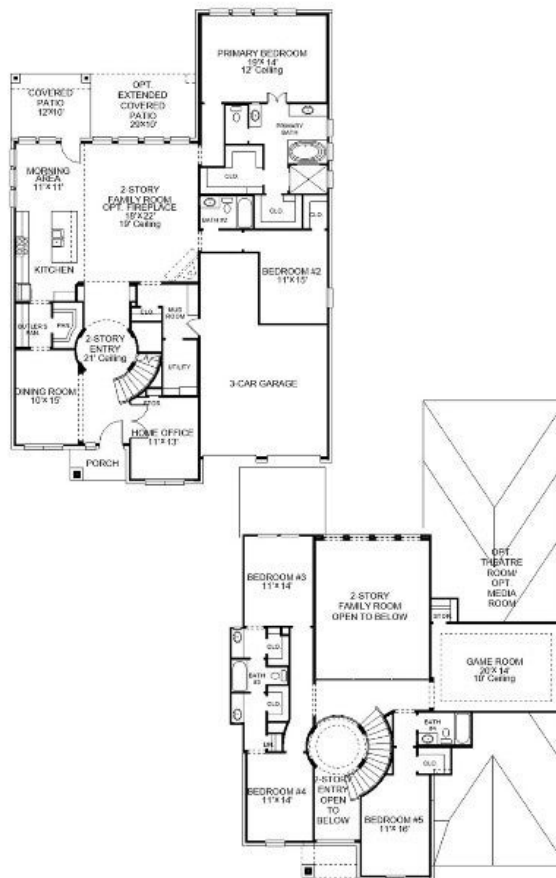
PERRY HOMES NEW CONSTRUCTION!

Two-story entry features curved staircase. Formal dining room and home office with French doors frame entry. Two-story family room with wall of windows opens to kitchen and morning area. Kitchen features walk-in pantry, Butler's pantry and island with built-in seating space. First-floor primary suite includes bedroom with 12-foot ceiling and wall of windows. Dual vanities, corner garden tub, separate glass-enclosed shower and two walk-in closets in primary bath. A second bedroom is downstairs. A game room, Hollywood bathroom and secondary bedrooms are upstairs. Covered backyard patio. Mud room off three-car garage.

Built in 2023

Essential Information

ListingFeed	abor_vow
MLS® #	3985457
List Price	\$1,182,900
Sale Price	\$1,182,606
Sale Date	November 27th, 2023
Bedrooms	5
Bathrooms	4.00
Full Baths	4
Square Footage	3,593
Acres	0.17
Year Built	2023



Type	Residential
Sub-Type	Single Family Residence
Status	Closed

Community Information

Address	6216 Sontag Drive
Subdivision	Sweetwater
City	Austin
County	Travis
State	TX
Zip Code	78738

Amenities

Utilities	Underground Utilities
Features	Barbecue, Common Grounds/Area, Clubhouse, Community Mailbox, Dog Park, Fitness Center, Playground, Pool, Sport Court(s), Trails/Paths
Parking	Attached, Garage Faces Front, Garage, Tandem
# of Garages	3
Garages	Garage Door Opener
View	Park/Greenbelt, Hills
Waterfront	None

Interior

Interior	Carpet, Tile
Appliances	Built-In Oven, Dishwasher, ENERGY STAR Qualified Appliances, Gas Cooktop, Disposal, Gas Water Heater, Microwave, Self Cleaning Oven
Heating	Natural Gas
Cooling	Central Air, Dual
Fireplace	Yes
# of Fireplaces	1
Fireplaces	Family Room
# of Stories	2
Stories	Two

Exterior

Exterior Features	Exterior Steps, Private Yard, Rain Gutters
Lot Description	Backs to Greenbelt/Park, Sprinklers In Rear, Sprinklers In Front
Windows	Double Pane Windows
Roof	Composition

Construction	Brick, Masonry, Stone
Foundation	Slab

School Information

District	Lake Travis ISD
Elementary	Rough Hollow
Middle	Lake Travis
High	Lake Travis