

\$2,995,000 - 1805 Groveton Cove, Austin

MLS® #4506028

\$2,995,000

5 Bedroom, 6.00 Bathroom, 4,000 sqft
Residential on 1.11 Acres

Lost Creek, Austin, TX

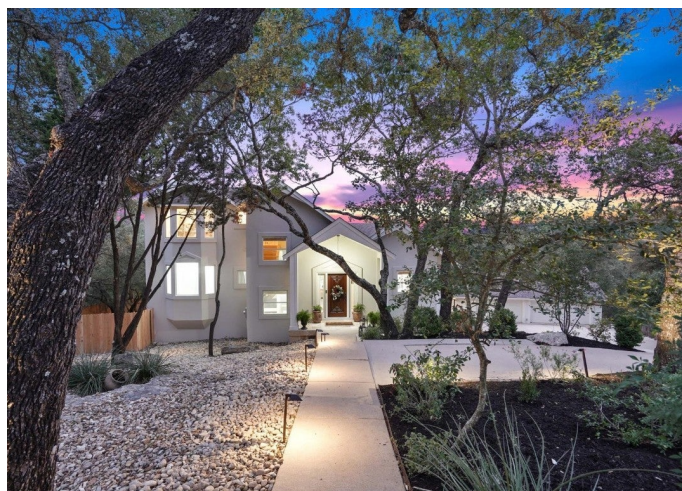
This elegant Lost Creek home is situated on over 1 Acre and has a stunning backdrop. To say this home has it all is an understatement. Views and backing to the Barton Creek Greenbelt. Eanes schools and at the end of a Cul de Sac. Flat backyard for kids and dogs to play. Pool for everyone's enjoyment. Oversized 3 car detached Garage. And that's just outside! Come on in!

Walk into the main floor entry and VIEWS are what captivate you from the onset. All surfaces have been touched in this home as it went through a major remodel in 2021/2022. Light and airy the Main floor has the Kitchen, Dining, Living and Primary Suite. Upstairs is a large Living Room that can be used as a Game Room, Office, Gym, Studio. On the Lower Level are 4 additional Bedrooms, 3 Full Baths and a Living area all opening out to the pool and yard. Approx 4131 SQ FT.

Built in 1995

Essential Information

ListingFeed	abor_vow
MLS® #	4506028
List Price	\$2,995,000
Sale Price	\$2,825,000
Sale Date	April 14th, 2023
Bedrooms	5
Bathrooms	6.00



Full Baths	4
Half Baths	2
Square Footage	4,000
Acres	1.11
Year Built	1995
Type	Residential
Sub-Type	Single Family Residence
Status	Closed

Community Information

Address	1805 Groveton Cove
Subdivision	Lost Creek
City	Austin
County	Travis
State	TX
Zip Code	78746

Amenities

Utilities	Electricity Connected, Natural Gas Connected, Sewer Connected
Features	Park, Trails/Paths, Golf
Parking	Detached, Oversized
# of Garages	3
View	Hills, Panoramic, Park/Greenbelt
Waterfront	None
Has Pool	Yes

Interior

Interior	Tile, Wood
Appliances	Built-In Refrigerator, Dishwasher, Exhaust Fan, Gas Cooktop, Disposal, Microwave, Built-In Electric Oven
Heating	Central
Cooling	Central Air
Stories	Three Or More

Exterior

Exterior Features	Balcony, Exterior Steps
Lot Description	Sprinklers Automatic, Trees Medium Size, Backs to Greenbelt/Park, Cul-De-Sac
Windows	Double Pane Windows

Roof	Composition
Construction	Masonry
Foundation	Slab

School Information

District	Eanes ISD
Elementary	Forest Trail
Middle	West Ridge
High	Westlake