

\$1,225,000 - 9234 Scenic Bluff Drive, Austin

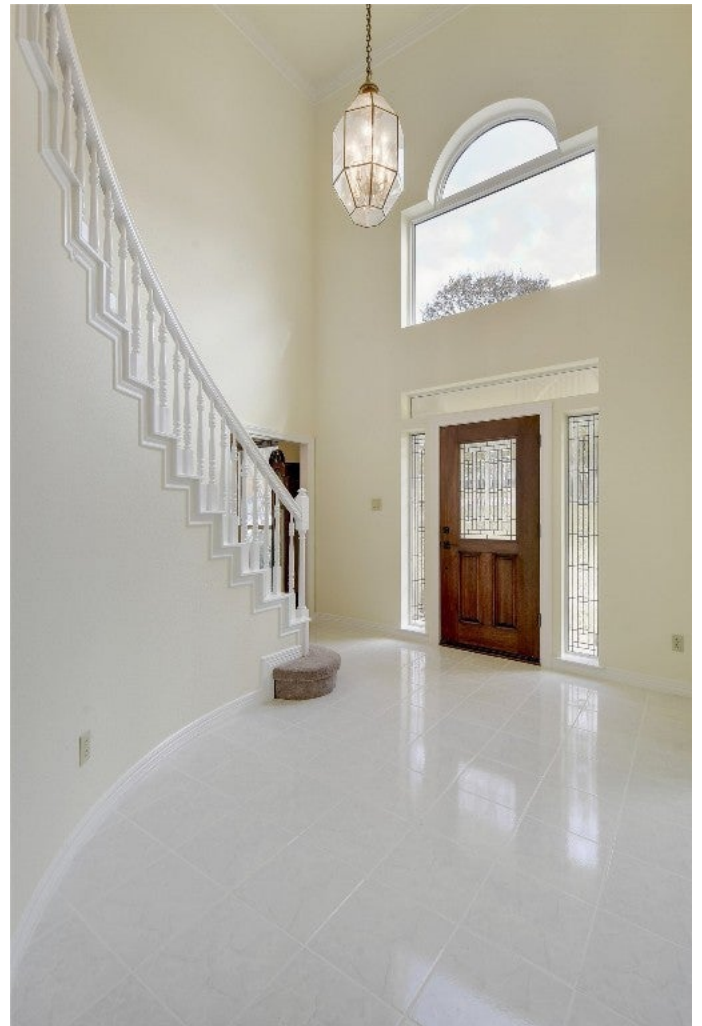
MLS® #4827882

\$1,225,000

5 Bedroom, 3.00 Bathroom, 3,266 sqft
Residential on 0.32 Acres

Barton Creek West, Austin, TX

Walk in to a wonderful rounded entry foyer with chandelier and soaring ceiling, sweeping staircase. Formal living to the left, formal dining to the right. Heart of this home is the family room open to the kitchen area all access to back yard deck. Birders paradise, large home with 5 bedrooms or 4 bedrooms and an office, backs to greenbelt with large deck area for lounging, meditating, bird watching, coffee sipping located in the Eanes school district and just a block from Westridge Middle school...no more driving and dropping off, with ample room at over 3250 sq. ft. Two living areas, one more formal and the other a family room with fireplace, open to kitchen with breakfast counter and in-kitchen dining and office desk, formal dining. Larger lot at over .3 acre and wrought iron fencing for the back area. Large primary bedroom up with double entry doors, updated primary bath. Flooring in the entry and the dining room are original. Kitchen, laundry and downstairs bath (large tile) and family room (bamboo) were done in 2003. "Formal" living room rug was replaced in 2006. Upstairs carpeting was about 2015, Upstairs baths remodeled with new flooring 2016. HVAC is year 2010. Updated with Kitchen granite countertops 2003, back deck 2007, sliding door and kitchen back door 2016, all new high-e windows 2016, 240V car charging outlet 2019, front door and side panels 2023. Please note this property did not lose power with the electric failure as it's on a priority line with the



water and waste-water departments.

Built in 1991

Essential Information

ListingFeed	abor_vow
MLS® #	4827882
List Price	\$1,225,000
Sale Price	\$1,174,500
Sale Date	February 9th, 2024
Bedrooms	5
Bathrooms	3.00
Full Baths	2
Half Baths	1
Square Footage	3,266
Acres	0.32
Year Built	1991
Type	Residential
Sub-Type	Single Family Residence
Status	Closed

Community Information

Address	9234 Scenic Bluff Drive
Subdivision	Barton Creek West
City	Austin
County	Travis
State	TX
Zip Code	78733

Amenities

Utilities	Electricity Available, Electricity Connected, Sewer Connected, Water Available, Water Connected
Features	Common Grounds/Area, Playground, Park, Pool, Trails/Paths
Parking	Driveway, Garage Faces Front, Garage, Inside Entrance, Off Street, Electric Vehicle Charging Station(s)
# of Garages	2
Garages	Garage Door Opener
View	Park/Greenbelt, Trees/Woods

Waterfront None

Interior

Interior Bamboo, Carpet, Tile, Wood

Appliances Built-In Electric Oven, Built-In Oven, Cooktop, Dishwasher, Electric Cooktop, Exhaust Fan, Electric Oven, Electric Water Heater, Microwave, Oven

Heating Central, Electric

Cooling Central Air, Electric

Fireplace Yes

of Fireplaces 1

Fireplaces Family Room

of Stories 2

Stories Two

Exterior

Exterior Features Exterior Steps, Private Yard, Rain Gutters

Lot Description Back Yard, Front Yard, Backs to Greenbelt/Park, Sprinklers In Rear, Sprinklers In Front, Sprinklers In Ground, Trees Medium Size

Windows Blinds, Bay Window(s), Drapes, Window Coverings, Window Treatments

Roof Composition

Construction Brick Veneer, Frame

Foundation Slab

School Information

District Eanes ISD

Elementary Barton Creek

Middle West Ridge

High Westlake