

\$2,695,000 - 2904 Meandering River Court, Austin

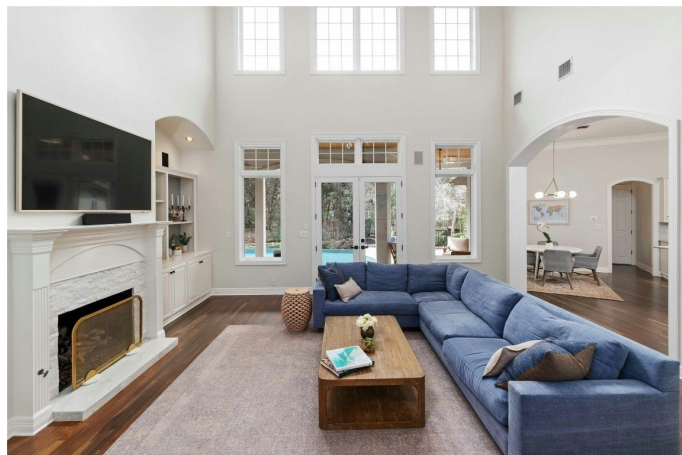
MLS® #5278745

\$2,695,000

4 Bedroom, 5.00 Bathroom, 3,865 sqft
Residential on 0.37 Acres

Westview On Lake Austin Ph C, Austin, TX

This home has an assumable 3.45% mortgage, giving buyers added buying power of \$250,000. Nestled at the end of a cul-de-sac within the highly coveted and gated West Rim Estates neighborhood, this gracious residence is the perfect destination for easy daily living and lively entertaining. Beautifully remodeled with four spacious bedrooms, designated study and three living areas, this home embodies timeless elegance. Open to the light-filled living room, the kitchen features designer light fixtures and Taj Mahal Quartzite countertops. A wall of windows opens to the outdoor spaces including a covered patio wrapping around the infinity pool, all overlooking the level backyard and private greenbelt. The serene main floor owner's retreat features a spa bath, sitting area and private entrance to the back patio. Upstairs you'll find the third living area with vaulted ceilings and three secondary bedrooms. This stunning home is in pristine condition. In this gated neighborhood, community is paramount. Access to over 3 miles of hiking trails around the neighborhood. Minutes from Lake Austin, downtown Austin, ACC and EISD schools, it's the perfect location to call home.



Built in 1998

Essential Information

ListingFeed	abor_vow
MLS® #	5278745

List Price	\$2,695,000
Sale Price	\$2,500,000
Sale Date	July 2nd, 2024
Bedrooms	4
Bathrooms	5.00
Full Baths	4
Half Baths	1
Square Footage	3,865
Acres	0.37
Year Built	1998
Type	Residential
Sub-Type	Single Family Residence
Status	Closed

Community Information

Address	2904 Meandering River Court
Subdivision	Westview On Lake Austin Ph C
City	Austin
County	Travis
State	TX
Zip Code	78746

Amenities

Utilities	Electricity Connected, Natural Gas Connected, Sewer Connected, Water Connected
Features	Common Grounds/Area, Trails/Paths
Parking	Attached, Door-Multi, Driveway, Garage, Off Street
# of Garages	3
View	Park/Greenbelt, Trees/Woods
Waterfront	None
Has Pool	Yes

Interior

Interior	Carpet, Tile, Wood
Appliances	Built-In Gas Oven, Built-In Refrigerator, Down Draft, Double Oven, Dishwasher, Gas Cooktop, Disposal, Microwave
Heating	Central
Cooling	Central Air
Fireplace	Yes

# of Fireplaces	1
Fireplaces	Family Room
# of Stories	2
Stories	Two

Exterior

Exterior Features	Private Yard, Rain Gutters
Lot Description	Cul-De-Sac, Backs to Greenbelt/Park, Many Trees, Sprinklers Automatic, Trees Large Size, Trees Medium Size
Windows	Double Pane Windows, Plantation Shutters
Roof	Composition
Construction	Masonry, Stone Veneer, Stucco
Foundation	Slab

School Information

District	Eanes ISD
Elementary	Bridge Point
Middle	Hill Country
High	Westlake