

\$1,247,900 - 17816 Pancho Trail, Austin

MLS® #5856364

\$1,247,900

4 Bedroom, 4.00 Bathroom, 3,904 sqft
Residential on 0.27 Acres

Sweetwater, Austin, TX

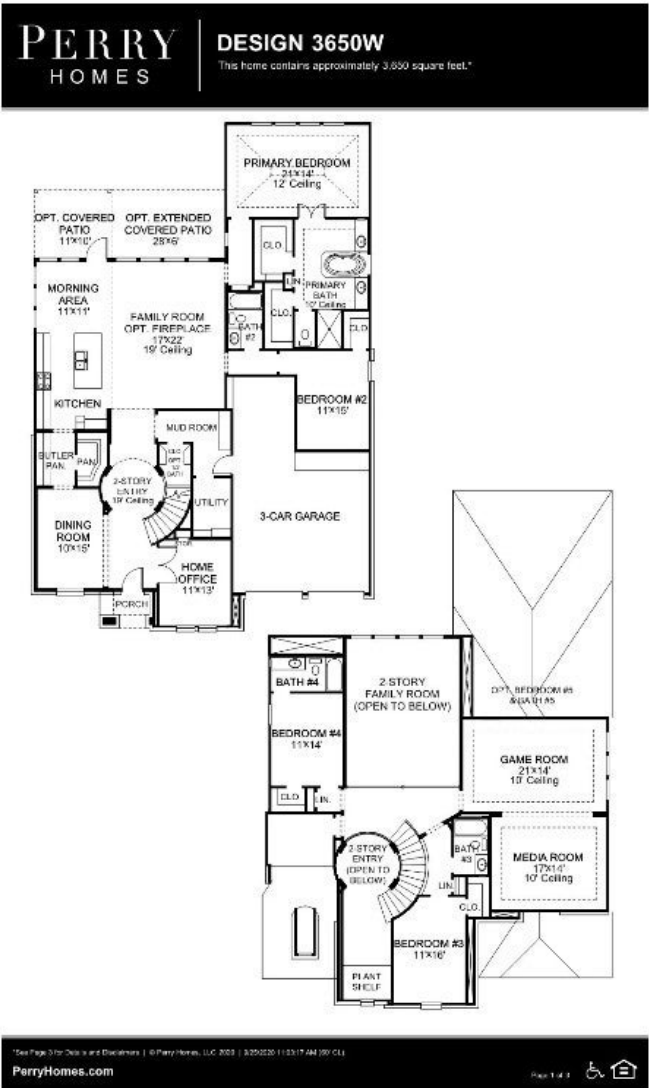
PERRY HOMES NEW CONSTRUCTION!

Two-story rotunda entry features curved staircase. Formal dining room and home office with French doors frame entry. Two-story family room with wall of windows opens to kitchen and morning area. Kitchen features large walk-in pantry, Butler's pantry and island with built-in seating space. First-floor primary suite includes bedroom with wall of windows. Dual vanities, garden tub, separate glass-enclosed shower and two walk-in closets in primary bath. A second bedroom is downstairs. Upstairs highlights a game room, media room and guest suite with private bath. Covered backyard patio. Mud room off three-car garage.

Built in 2023

Essential Information

ListingFeed	abor_vow
MLS® #	5856364
List Price	\$1,247,900
Sale Price	\$1,247,206
Sale Date	January 2nd, 2024
Bedrooms	4
Bathrooms	4.00
Full Baths	4
Square Footage	3,904
Acres	0.27
Year Built	2023



Type	Residential
Sub-Type	Single Family Residence
Status	Closed

Community Information

Address	17816 Pancho Trail
Subdivision	Sweetwater
City	Austin
County	Travis
State	TX
Zip Code	78738

Amenities

Utilities	Underground Utilities
Features	Barbecue, Common Grounds/Area, Clubhouse, Community Mailbox, Dog Park, Fitness Center, Playground, Pool, Sport Court(s), Trails/Paths
Parking	Attached, Garage Faces Front, Garage, Tandem
# of Garages	3
Garages	Garage Door Opener
View	Park/Greenbelt, Hills
Waterfront	None

Interior

Interior	Carpet, Tile
Appliances	Built-In Oven, Dishwasher, ENERGY STAR Qualified Appliances, Gas Cooktop, Disposal, Microwave, Self Cleaning Oven, Tankless Water Heater
Heating	Natural Gas
Cooling	Central Air, Dual
Fireplace	Yes
# of Fireplaces	1
Fireplaces	Family Room
# of Stories	2
Stories	Two

Exterior

Exterior Features	Exterior Steps, Private Yard, Rain Gutters
Lot Description	Backs to Greenbelt/Park
Windows	Double Pane Windows

Roof	Composition
Construction	Brick, Masonry, Stone, Stucco
Foundation	Slab

School Information

District	Lake Travis ISD
Elementary	Rough Hollow
Middle	Lake Travis
High	Lake Travis