

\$3,700,000 - 20401 Fm 685, Pflugerville

MLS® #6015649

\$3,700,000

0 Bedroom, 0.00 Bathroom,
Commercial Sale on 5.03 Acres

None, Pflugerville, TX

Great Location located just North of Rowe Lane on the East Frontage Road of Hwy 130 Tollway. One of the few remaining tracts located on the East frontage road between Rowe Lane and Gattis School Road. All Utilities Available. Great Visibility...

Built in 1979

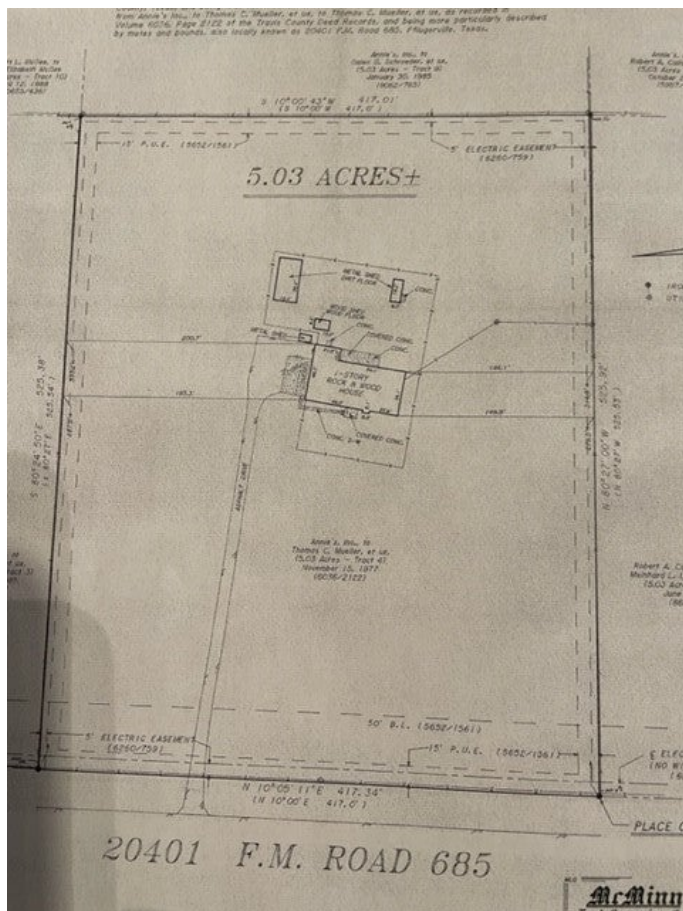
Essential Information

ListingFeed	abor_vow
MLS® #	6015649
List Price	\$3,700,000
Sale Price	\$3,600,000
Sale Date	December 28th, 2022
Bathrooms	0.00
Acres	5.03
Year Built	1979
Type	Commercial Sale
Sub-Type	Other
Status	Closed

Community Information

Address	20401 Fm 685
Subdivision	None
City	Pflugerville
County	Travis
State	TX
Zip Code	78660

Amenities



Utilities	Electricity Connected, Other, Water Connected
Parking	Garage, Garage Faces Side

Exterior

Construction	Brick
Foundation	Slab