

# \$1,285,990 - 614 Bonfisk Bend, Lakeway

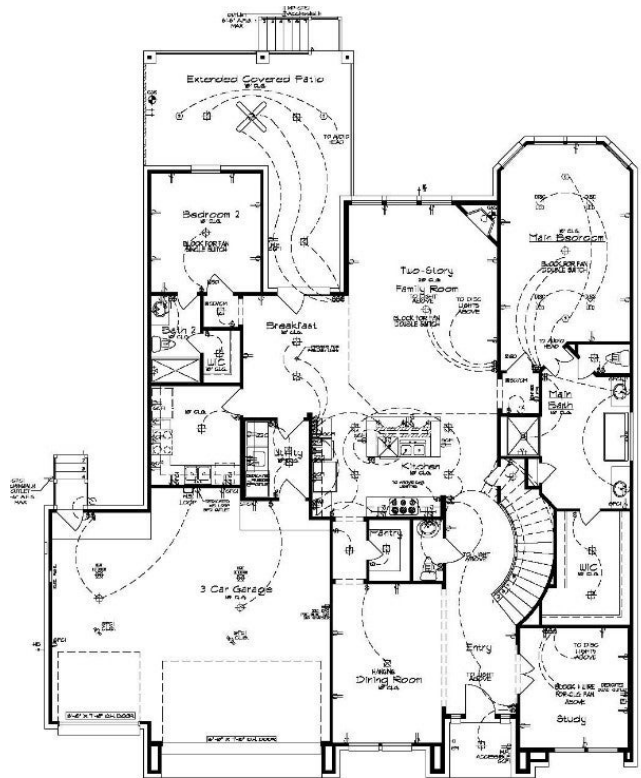
MLS® #6270826

**\$1,285,990**

5 Bedroom, 6.00 Bathroom, 3,875 sqft  
Residential on 0.69 Acres

Rough Hollow, Lakeway, TX

Newmark Homes stunning 2-story Lady Bird Plan, in Rough Hollow's newest section, Santa Luz, is a 5 bed/ 5.5 bath/ 3 car garage home. It includes many high-end finishes such as: an extended rear covered patio and balcony, game room, media room, dining room, bay windows in the main bedroom, caters kitchen, butler's pantries, study, fireplace, 2-story ceiling in the family room, walk-in closets in every bedroom, stainless steel appliances, open concept, and tankless water heater.



Built in 2023

## Essential Information

ListingFeed	abor_vow
MLS® #	6270826
List Price	\$1,285,990
Sale Price	\$1,124,136
Sale Date	November 21st, 2023
Bedrooms	5
Bathrooms	6.00
Full Baths	5
Half Baths	1
Square Footage	3,875
Acres	0.69
Year Built	2023
Type	Residential
Sub-Type	Single Family Residence
Status	Closed

## Community Information

Address	614 Bonfisk Bend
Subdivision	Rough Hollow
City	Lakeway
County	Travis
State	TX
Zip Code	78738

## Amenities

Utilities	Electricity Connected, Propane, Sewer Connected, Water Connected
Features	Common Grounds/Area, Clubhouse, Dog Park, Fitness Center, Lake, Pet Amenities, Playground, Park, Pool, Planned Social Activities, Restaurant, Sport Court(s), Street Lights, Sidewalks, Tennis Court(s), Trails/Paths
Parking	Garage Faces Front, Garage
# of Garages	3
Garages	Garage Door Opener
View	None
Waterfront	None

## Interior

Interior	Carpet, Wood
Appliances	Built-In Oven, Dishwasher, Microwave, Oven, Propane Cooktop, Range Hood, Stainless Steel Appliance(s), Tankless Water Heater
Heating	Central, Propane
Cooling	Central Air, Ceiling Fan(s), Zoned
Fireplace	Yes
# of Fireplaces	1
Fireplaces	Family Room
# of Stories	2
Stories	Two

## Exterior

Exterior Features	In-Wall Pest Control System, Rain Gutters
Lot Description	Sprinklers Automatic
Windows	Double Pane Windows, Low Emissivity Windows, Vinyl
Roof	Composition, Shingle
Construction	Cement Siding, Stone, Stucco
Foundation	Slab

## School Information

District	Lake Travis ISD
Elementary	Rough Hollow
Middle	Lake Travis
High	Lake Travis