

# \$2,250,000 - 814 James Street, Austin

MLS® #6341780

---

## \$2,250,000

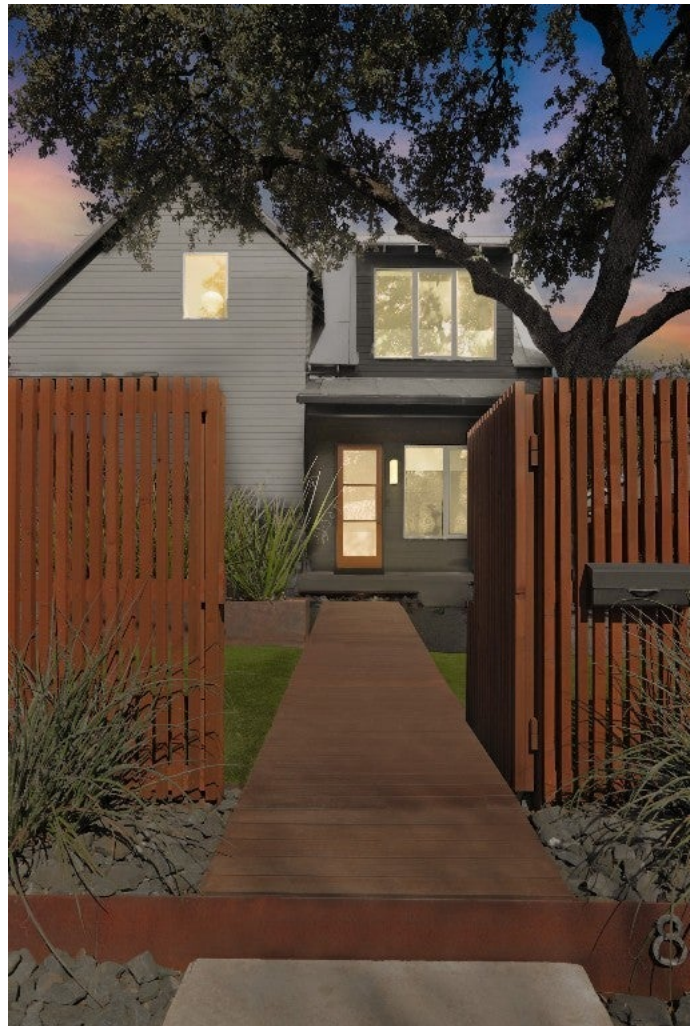
3 Bedroom, 3.00 Bathroom, 2,443 sqft  
Residential on 0.14 Acres

South Heights, Austin, TX

Discover modern living in this striking Bouldin Creek home, built by the renowned Moore-Tate, and enhanced by designer Joel Mozersky. Sleek design across two levels showcasing top-notch finishes in a spacious setting where luxury is thoughtfully shown in every detail. Step into a blend of style and comfort, with easy access to the city's hotspots. Experience the open living space with a seamless indoor-outdoor transition, perfect for entertaining. The chef's kitchen boasts custom features including top-of-the-line appliances, custom cabinetry, and premium stone countertops. The dining space shines with a stunning Kelly Wearstler chandelier, ready for unforgettable moments.

The private owner's suite is a peaceful retreat, overlooking a low-maintenance yard with lush turf and a grand live oak tree. The upper floor offers a cozy living space and two spacious secondary bedrooms, each versatile for any need. Unique in the neighborhood, this property includes a secure two-car carport with extra storage. For future summers, there is space that has been envisioned for a chic Modpool, with existing renderings to spark ideas. This gem is more than a home; it's an experience of stylish city living paired with a lock-and-leave factor, ideal for those seeking the best of Austin's lifestyle.

Built in 2014



## Essential Information

ListingFeed	abor_vow
MLS® #	6341780
List Price	\$2,250,000
Sale Price	\$2,090,000
Sale Date	April 4th, 2024
Bedrooms	3
Bathrooms	3.00
Full Baths	2
Half Baths	1
Square Footage	2,443
Acres	0.14
Year Built	2014
Type	Residential
Sub-Type	Single Family Residence
Status	Closed

## Community Information

Address	814 James Street
Subdivision	South Heights
City	Austin
County	Travis
State	TX
Zip Code	78704

## Amenities

Utilities	Electricity Available, See Remarks, Water Available
Features	See Remarks, Trails/Paths
Parking	Attached, Carport
# of Garages	2
View	None
Waterfront	None

## Interior

Interior	Concrete, Wood
Appliances	Built-In Gas Oven, Dishwasher, Gas Cooktop, Disposal, Gas Oven, Microwave, Range Hood, Tankless Water Heater
Heating	Central
Cooling	Central Air, Ceiling Fan(s)

# of Stories	2
Stories	Two

### **Exterior**

Exterior Features	Covered Courtyard, Private Yard
Lot Description	Back Yard, Front Yard, Landscaped, Moderate Trees, Private
Windows	See Remarks
Roof	Metal, Mixed, Shingle
Construction	Board & Batten Siding
Foundation	Slab

### **School Information**

District	Austin ISD
Elementary	Becker
Middle	Lively
High	Travis