

\$2,520,381 - Tbd E Slaughter Lane, Austin

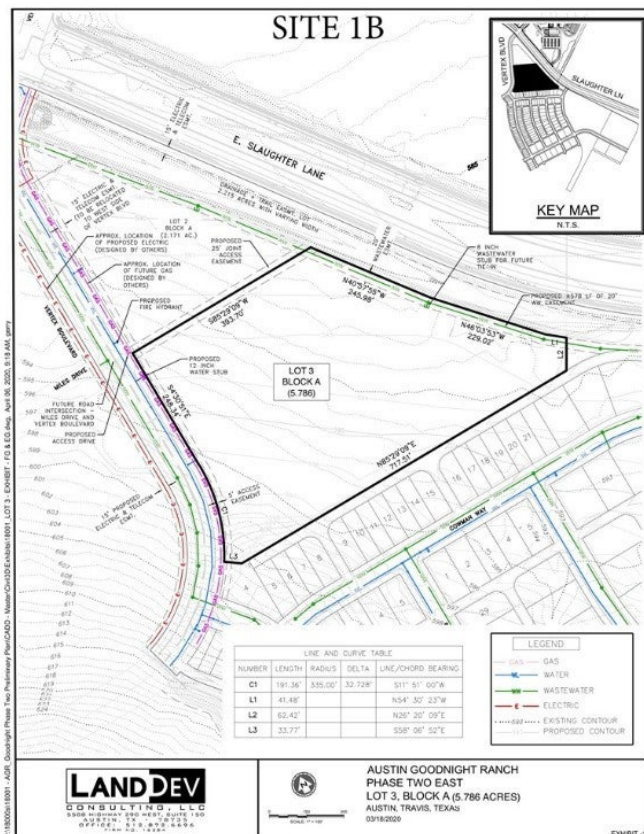
MLS® #6372274

\$2,520,381

0 Bedroom, 0.00 Bathroom,
Commercial Sale on 5.79 Acres

Land Region 420, Austin, TX

This commercial site is within Austin's newest master planned community Goodnight Austin, where there are approvals for 3,500 residential units and 260,000 sf of commercial space within. South Park Meadows is approximately 1.5 miles away at IH-35 and Slaughter Lane and offers full retail support services. Austin ISD's Blazier Elementary educates approximately 900 students grades K-5 and is within the Goodnight Austin development. Site includes off-site detention and water quality.



Essential Information

ListingFeed	abor_vow
MLS® #	6372274
List Price	\$2,520,381
Sale Price	\$2,115,083
Sale Date	July 6th, 2022
Bathrooms	0.00
Acres	5.79
Type	Commercial Sale
Sub-Type	Retail
Status	Closed

Community Information

Address	Tbd E Slaughter Lane
Subdivision	Land Region 420
City	Austin
County	Travis

State	TX
Zip Code	78747

Amenities

Utilities	Electricity Available, Natural Gas Available, Other, Phone Available
Features	None, Sidewalks
Parking	None
Waterfront	None

Interior

Heating	None
Cooling	None

Exterior

Lot Description	Corner Lot, Level
-----------------	-------------------

Additional Information

Zoning	PUD
--------	-----