

# \$1,799,000 - 6730 Jester Boulevard, Austin

MLS® #6518730

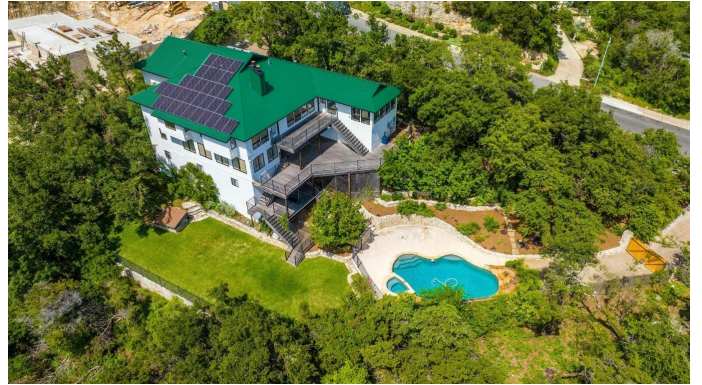
---

## \$1,799,000

4 Bedroom, 5.00 Bathroom, 4,742 sqft  
Residential on 0.63 Acres

Jester Estate Sec 01 Ph 01, Austin, TX

One-of-a-kind hillside home in NW Austin with stunning Downtown Austin and Hill Country views across three levels. Over 5000 sqft of conditioned space, move-in ready with a chef's kitchen, a main-level primary suite, and a second-level media room with professional golf simulator. The third lower level offers versatility as a guest suite, home gym, or short term rental. Backyard features pool, terraced decks, native landscaping, and large trees. Second driveway for boat storage or additional parking. Perfect for those looking for privacy and convenience, with easy access to major roads, world-class golf courses, greenbelt and top-tier schools. Rare find with great potential!



Built in 1984

## Essential Information

ListingFeed	abor_vow
MLS® #	6518730
List Price	\$1,799,000
Sale Price	\$1,600,000
Sale Date	June 14th, 2024
Bedrooms	4
Bathrooms	5.00
Full Baths	4
Half Baths	1
Square Footage	4,742
Acres	0.63
Year Built	1984

Type	Residential
Sub-Type	Single Family Residence
Status	Closed

### **Community Information**

Address	6730 Jester Boulevard
Subdivision	Jester Estate Sec 01 Ph 01
City	Austin
County	Travis
State	TX
Zip Code	78750

### **Amenities**

Utilities	Electricity Connected, Natural Gas Connected, Sewer Connected, Water Connected
Features	None
Parking	Additional Parking, Attached, Driveway, Garage Faces Front, Garage, RV Gated, RV Access/Parking
# of Garages	2
View	City, Hills
Waterfront	None
Has Pool	Yes

### **Interior**

Interior	Carpet, Tile, Wood
Appliances	Bar Fridge, Dishwasher, Free-Standing Gas Range, Disposal, Microwave, Refrigerator, Range Hood, Stainless Steel Appliance(s)
Heating	Central
Cooling	Central Air, Multi Units
Fireplace	Yes
# of Fireplaces	1
Fireplaces	Double Sided, Living Room, Primary Bedroom, Wood Burning
Stories	Three Or More

### **Exterior**

Exterior Features	Balcony, Exterior Steps, Private Entrance, Rain Gutters
Lot Description	Back Yard, Sloped Down, Backs to Greenbelt/Park, Native Plants, Sprinklers In Ground, Trees Large Size
Windows	Blinds, Skylight(s)

Roof	Metal
Construction	Masonry, Stucco
Foundation	Slab

### **School Information**

District	Austin ISD
Elementary	Hill
Middle	Murchison
High	Anderson