

\$1,345,000 - 9909 Highway 290 W, Austin

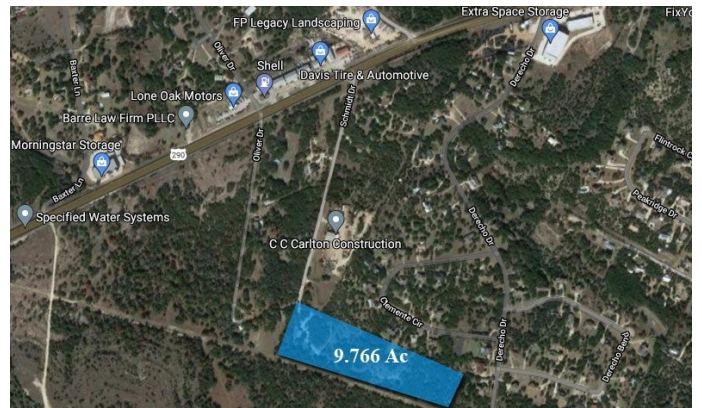
MLS® #7135257

\$1,345,000

0 Bedroom, 0.00 Bathroom,
Commercial Sale on 9.77 Acres

None, Austin, TX

9.766 acres in high traffic corridor located at the end of Schmidt Ln off of US 290 W. No frontage on 290 but easy access. Great location for an industrial user, recreation center, religious site, or residential lots. Roughly 3/4 of Schmidt Ln is paved. Property has a Quonset metal building and a 3/1 home. Impervious coverage 25%, buyer to verify. Contact listing agent for survey.



Built in 1997

Essential Information

ListingFeed	abor_vow
MLS® #	7135257
List Price	\$1,345,000
Sale Price	\$1,300,000
Sale Date	October 1st, 2021
Bathrooms	0.00
Acres	9.77
Year Built	1997
Type	Commercial Sale
Sub-Type	Warehouse
Status	Closed

Community Information

Address	9909 Highway 290 W
Subdivision	None
City	Austin
County	Travis

State	TX
Zip Code	78736

Amenities

Utilities	Electricity Connected, Sewer Not Available, Water Available
Parking	None

Interior

Interior	See Remarks
Heating	None
Cooling	None

Additional Information

Zoning	Outside of City Limits, i
--------	---------------------------