

# \$1,150,000 - 21537 Ih-35 Highway N, Kyle

MLS® #7146331

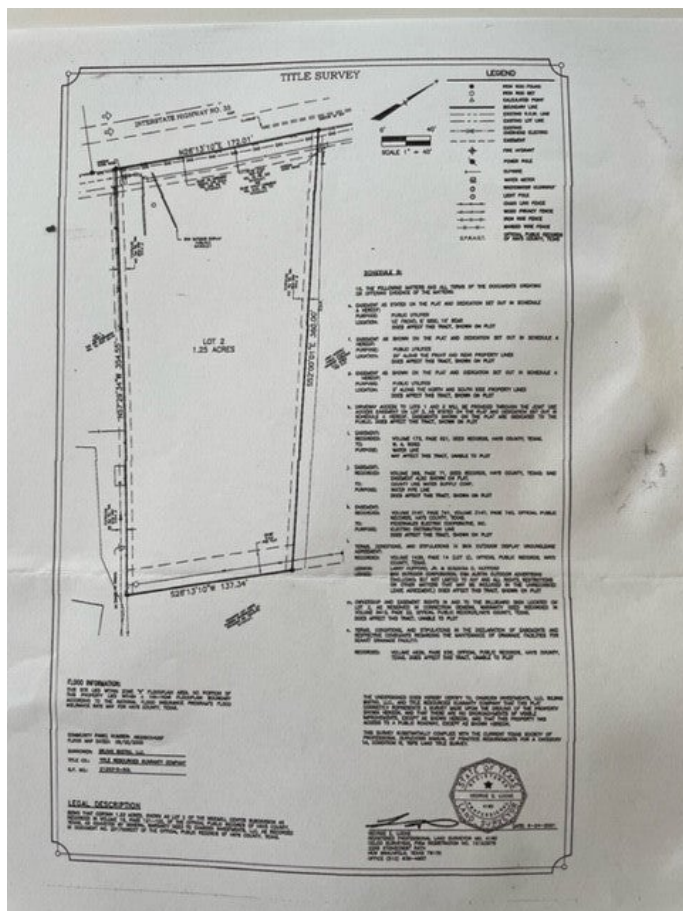
**\$1,150,000**

0 Bedroom, 0.00 Bathroom,  
Commercial Sale on 1.25 Acres

Windmill Center, Kyle, TX

1.25-acre commercial lot zoned R/S ( retail services). All utilities are at the site (underground electric, natural gas, water and sewer). A water detention pond is already built offsite. Just need to get your building plans approved and start building. Ideal location for retail, restaurant, hotel, office and etc. 172â€™™ frontage on IH-35 access road in Kyle, TX one of the fastest growing cities. The site is located just south of Hays Seton Medical Center and a rapidly developing retail center and apartments.

Built in 2022



## Essential Information

ListingFeed	abor_vow
MLS® #	7146331
List Price	\$1,150,000
Sale Price	\$950,000
Sale Date	August 8th, 2023
Bathrooms	0.00
Acres	1.25
Year Built	2022
Type	Commercial Sale
Sub-Type	Retail
Status	Closed

## Community Information

Address	21537 Ih-35 Highway N
Subdivision	Windmill Center

City	Kyle
County	Hays
State	TX
Zip Code	78640

### **Amenities**

Utilities	Electricity Available, Sewer Available, See Remarks, Water Available, Natural Gas Available, Phone Available
Parking	None

### **Interior**

Interior	See Remarks
Heating	None
Cooling	None

### **Exterior**

Lot Description	Level
Foundation	None

### **Additional Information**

Zoning	RS
--------	----