

# \$1,310,900 - 17804 Pancho Trail, Austin

MLS® #8392766

**\$1,310,900**

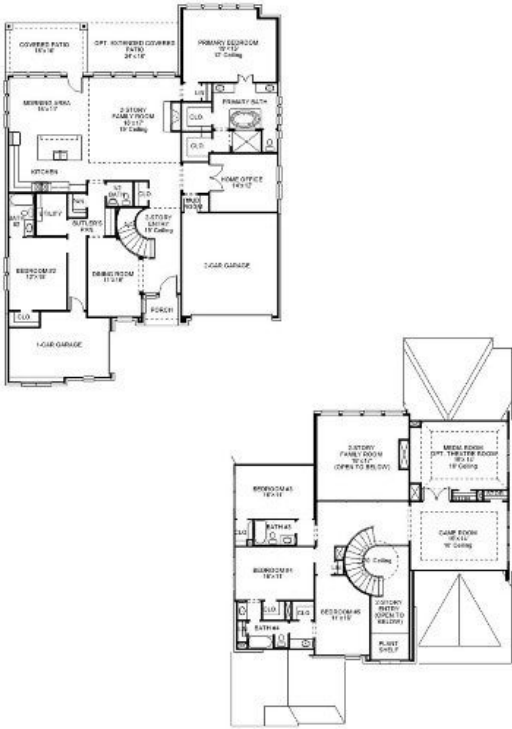
5 Bedroom, 5.00 Bathroom, 4,097 sqft  
Residential on 0.27 Acres

**PERRY**  
HOMES

**DESIGN 4097W**  
This home contains approximately 4,097 square feet.\*

Sweetwater, Austin, TX

Perry Homes New Construction! Two-story entry and family room with a wall of windows. Home office with French doors and formal dining room frame entry. Kitchen features island with built-in seating space, a walk-in pantry and a Butler's pantry. Private primary suite features a curved wall of windows. Primary bath features a corner garden tub, separate glass-enclosed shower, dual vanities and a large walk-in closet. Downstairs guest suite with full bath and walk-in closet. Upstairs game room, media room with storage closet and secondary bedrooms complete the second floor. Mud room. Three-car split garage.



Built in 2023

## Essential Information

ListingFeed	abor_vow
MLS® #	8392766
List Price	\$1,310,900
Sale Price	\$1,310,735
Sale Date	September 27th, 2023
Bedrooms	5
Bathrooms	5.00
Full Baths	4
Half Baths	1
Square Footage	4,097
Acres	0.27
Year Built	2023

Type	Residential
Sub-Type	Single Family Residence
Status	Closed

### Community Information

Address	17804 Pancho Trail
Subdivision	Sweetwater
City	Austin
County	Travis
State	TX
Zip Code	78738

### Amenities

Utilities	Underground Utilities
Features	Barbecue, Common Grounds/Area, Clubhouse, Community Mailbox, Dog Park, Fitness Center, Playground, Pool, Sport Court(s), Trails/Paths
Parking	Attached, Garage Faces Front, Garage
# of Garages	3
Garages	Garage Door Opener
View	Park/Greenbelt, Hills, Trees/Woods
Waterfront	None

### Interior

Interior	Carpet, Tile
Appliances	Built-In Oven, Dishwasher, ENERGY STAR Qualified Appliances, Gas Cooktop, Disposal, Gas Water Heater, Microwave
Heating	Natural Gas
Cooling	Central Air
Fireplace	Yes
# of Fireplaces	1
Fireplaces	None
# of Stories	2
Stories	Two

### Exterior

Exterior Features	Exterior Steps, Private Yard, Rain Gutters
Lot Description	Sprinklers In Rear, Sprinklers In Front
Windows	Double Pane Windows
Roof	Composition

Construction	Brick, Masonry, Stone
Foundation	Slab

**School Information**

District	Lake Travis ISD
Elementary	Rough Hollow
Middle	Lake Travis
High	Lake Travis