

\$3,400,000 - 8613 N Lamar Boulevard, Austin

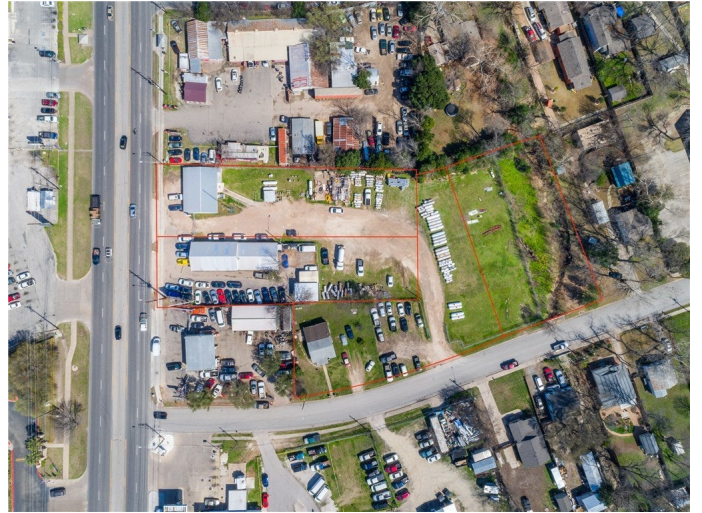
MLS® #9464291

\$3,400,000

0 Bedroom, 0.00 Bathroom,
Commercial Sale on 2.01 Acres

Fiskville School Add, Austin, TX

Prime commercial with a total of approximately 2.01 ac. Frontage on N. Lamar 152.40 ft. and Beaver 234 ft. Developed and undeveloped. 8606 and 8613 N. Lamar zoned CS-V-CO-NP, 706 Beaver is CS-V, Mixed-use, North Lamar NP and Georgian Acres, 606 Beaver. Two tenants in current leases. Prime development possibilities with this much land and multiple entrances. Restrictions: Yes



Built in 1947

Essential Information

ListingFeed	abor_vow
MLS® #	9464291
List Price	\$3,400,000
Sale Price	\$3,400,000
Sale Date	November 3rd, 2021
Bathrooms	0.00
Acres	2.01
Year Built	1947
Type	Commercial Sale
Sub-Type	Office
Status	Closed

Community Information

Address	8613 N Lamar Boulevard
Subdivision	Fiskville School Add
City	Austin
County	Travis

State	TX
Zip Code	78753

Amenities

Utilities	Electricity Available
Features	None
Parking	On Site
View	None
Waterfront	None

Interior

Interior	Concrete
Heating	See Remarks
Cooling	Central Air

Exterior

Exterior Features	Storage
Lot Description	Level
Roof	Metal
Construction	Metal Siding, Stone Veneer, Wood Siding
Foundation	Slab

Additional Information

Zoning	comm
--------	------