

\$2,250,000 - 3906 Bonnell Drive, Austin

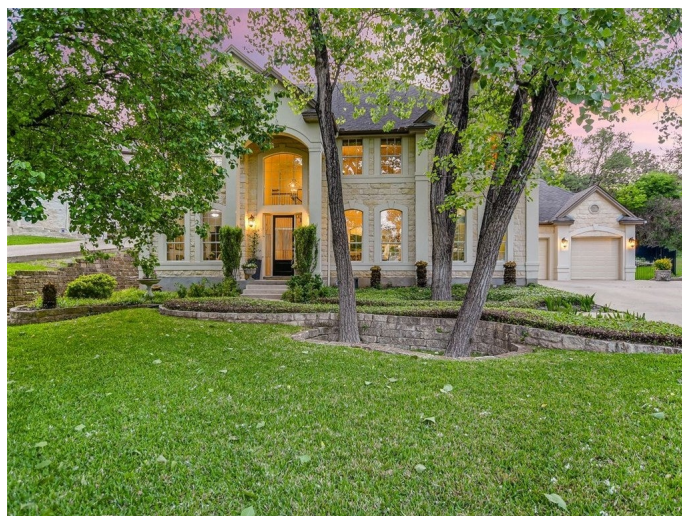
MLS® #9976901

\$2,250,000

4 Bedroom, 3.00 Bathroom, 3,302 sqft
Residential on 1.38 Acres

Mount Bonnell Terrace Sec 03, Austin, TX

Seated in the coveted Mt. Bonnell Village, this elegant 4 bed/2.5 bath (3,302 sq ft) original build offers peaceful seclusion on a lush, wooded 1.38-acre lot in the hills. A sweeping main living area with a beautiful stone fireplace opens up directly to the backyard through French doors. A second living area with a wet bar and formal dining room offers a prime space for entertaining. Enjoy a spacious updated kitchen with a new double oven with breakfast area and walk-in pantry. The large primary bedroom includes a walk-in closet and ensuite with double vanity, renovated eight years ago. Other notable features include an office, utility/laundry room, attic, and 2-car garage with plenty of room for additional storage. Completely fenced in with barbed wire at the top, this property preserves both safety and privacy. Just minutes away from panoramic views of Covert Park, the Colorado River, and several nature preserves, this home brings dynamic luxury to an active outdoors lifestyle. Room to add a pool.



Built in 1994

Essential Information

ListingFeed	abor_vow
MLS® #	9976901
List Price	\$2,250,000
Sale Price	\$2,000,000
Sale Date	December 21st, 2021

Bedrooms	4
Bathrooms	3.00
Full Baths	2
Half Baths	1
Square Footage	3,302
Acres	1.38
Year Built	1994
Type	Residential
Sub-Type	Single Family Residence
Status	Closed

Community Information

Address	3906 Bonnell Drive
Subdivision	Mount Bonnell Terrace Sec 03
City	Austin
County	Travis
State	TX
Zip Code	78731

Amenities

Utilities	See Remarks, Water Not Available
Features	None
Parking	Attached, Garage
# of Garages	2
View	None
Waterfront	None

Interior

Interior	Tile, Wood
Appliances	Double Oven, Dryer, Dishwasher, Electric Cooktop, Freezer, Disposal, Induction Cooktop, Microwave, Washer
Heating	Central
Cooling	Central Air
Fireplace	Yes
# of Fireplaces	1
Fireplaces	Living Room
# of Stories	2
Stories	Two

Exterior

Exterior Features	Private Yard
Lot Description	Back Yard, Cul-De-Sac, Front Yard, Landscaped, Private, Many Trees, Sprinklers Automatic
Windows	Blinds, Drapes
Roof	Composition
Construction	Masonry
Foundation	Slab

School Information

District	Austin ISD
Elementary	Casis
Middle	O Henry
High	Austin