

\$1,186,200 - S Hwy 183, Lockhart

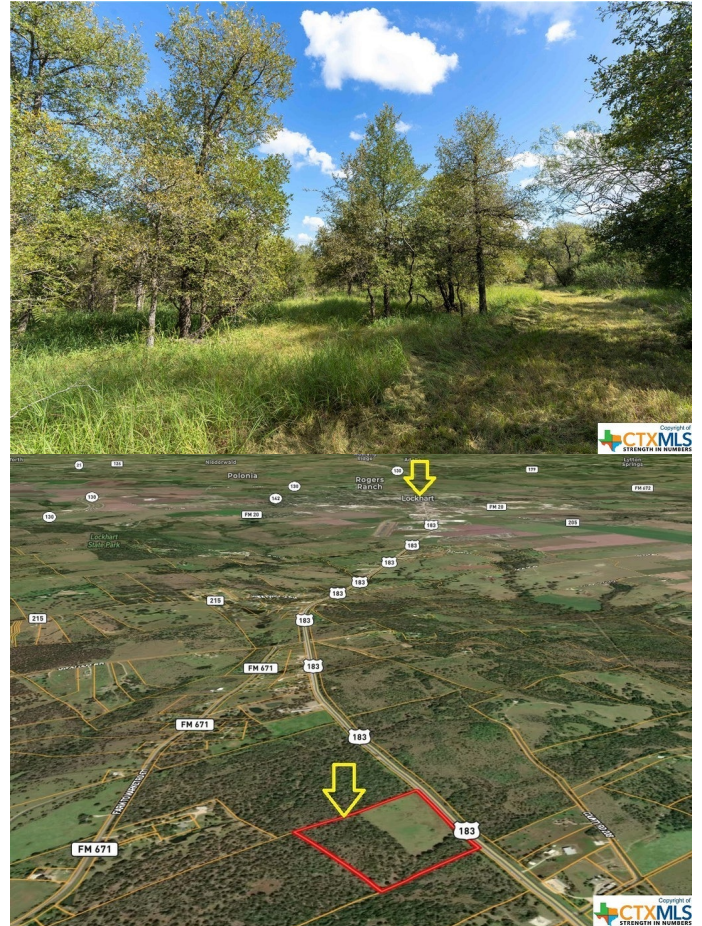
MLS® #494331

\$1,186,200

0 Bedroom, 0.00 Bathroom,
Land on 26.36 Acres

N/A, Lockhart, Texas

26.3 Acres with over 1,050 feet of Hwy 183 frontage just south of Lockhart. Lots of growth happening in the Lockhart area and Caldwell County! Outside of the ETJ. Many possibilities here. Partially wooded (apprx 17 acres) and partially cleared (apprx 9 acres). Nice mixture of trees in the back. Wildlife exemption in place. Fenced on 3 sides. Wet weather creek on the south edge of the property. **Seller may consider dividing into 10+ acre tracts** Make an appointment to view this one soon! Approximately 35-40 min drive to ABIA or TESLA and 4.5 miles to Wal-Mart. See agent about seller imposed restrictions.



Essential Information

MLS® #	494331
Price	\$1,186,200
Bathrooms	0.00
Acres	26.36
Type	Land
Sub-Type	Acreage
Status	Active

Community Information

Address	S Hwy 183
Subdivision	N/A
City	Lockhart
County	Caldwell
State	Texas

Zip Code 78644

Amenities

Utilities Electricity Available

Features None

View Meadow, Creek/Stream, Seasonal View, Trees/Woods

Exterior

Exterior Features None

Lot Description 1078' X 1252'

School Information

District Luling ISD

Elementary Luling Primary

Middle Luling Junior High School

High Luling High School

Additional Information

Date Listed December 31st, 2022

Days on Market 551

Listing Details

Listing Office Link Realty, LLC

The information being provided by the Central Texas MLS is exclusively for consumers' personal, non-commercial use, and it may not be used for any purpose other than to identify prospective properties consumers may be interested in purchasing. The data is deemed reliable but is not guaranteed accurate by the MLS.