

\$1,186,200 - S Hwy 183, Lockhart

MLS® #494333

\$1,186,200

0 Bedroom, 0.00 Bathroom,
Commercial Sale on 26.36 Acres

N/A, Lockhart, Texas

26.3 Acres with over 1,050 feet of Hwy 183 frontage just south of Lockhart. Lots of growth happening in the Lockhart area and Caldwell County! Outside of the ETJ. Many possibilities here. Partially wooded (apprx 17 acres) and partially cleared (apprx 9 acres). Nice mixture of trees in the back. Wildlife exemption in place. Fenced on 3 sides. Wet weather creek on the south edge of the property. **Seller may consider dividing into 10+ acre tracts** Make an appointment to view this one soon! Approximately 35-40 min drive to ABIA or TESLA and 4.5 miles to Wal-Mart. See agent about seller

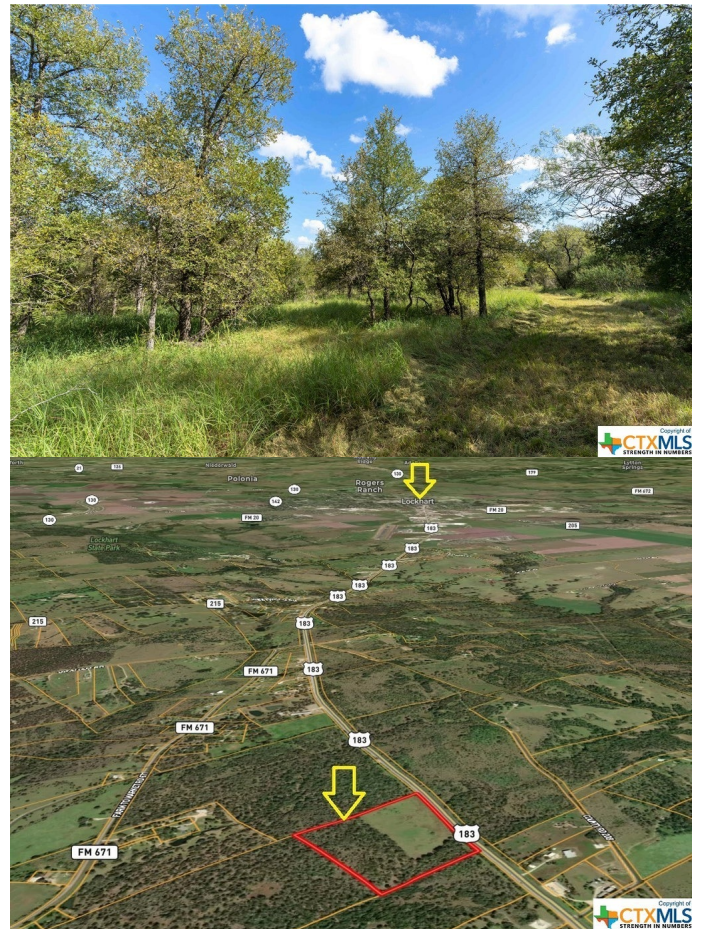
imposed restrictions.

Essential Information

MLS® #	494333
Price	\$1,186,200
Bathrooms	0.00
Acres	26.36
Type	Commercial Sale
Sub-Type	Commercial
Status	Active

Community Information

Address	S Hwy 183
Subdivision	N/A



City	Lockhart
County	Caldwell
State	Texas
Zip Code	78644

Amenities

Amenities	None
Utilities	Electricity Available
Features	None
Parking	None
View	Meadow, Creek/Stream, Seasonal View, Trees/Woods

Interior

Heating	None
Cooling	None
Stories	None

Exterior

Lot Description	1078' X 1252'
Foundation	None

School Information

District	Luling ISD
Elementary	Luling Primary
Middle	Luling Junior High School
High	Luling High School

Additional Information

Date Listed	December 31st, 2022
Days on Market	551
Zoning	NA

Listing Details

Listing Office	Link Realty, LLC
----------------	------------------

The information being provided by the Central Texas MLS is exclusively for consumers' personal, non-commercial use, and it may not be used for any purpose other than to identify prospective properties consumers may be interested in purchasing. The data is deemed reliable but is not guaranteed accurate by the MLS.