

\$218,900 - 5212 Donegal Bay Court, Killeen

MLS® #530506

\$218,900

3 Bedroom, 2.00 Bathroom, 1,317 sqft
Residential on 0.12 Acres

Bridgewood Add, Killeen, Texas

This sounds like a fantastic opportunity!

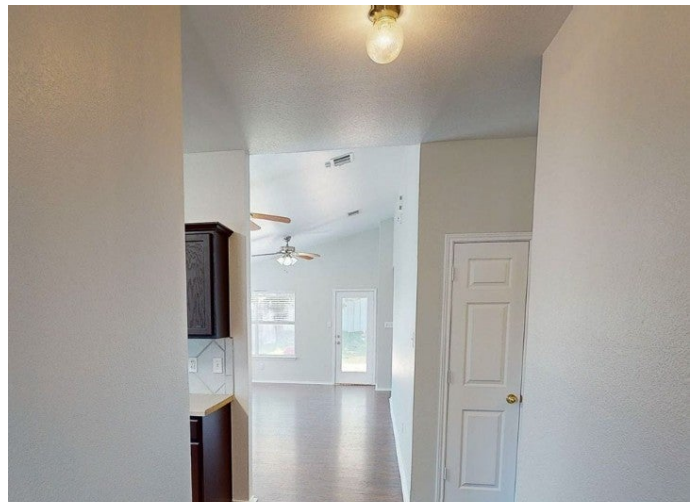
Welcome to the all-new 5212 Donegal Bay!
Nestled in a serene suburban setting, this charming 3-bedroom, 2-bathroom home offers a perfect blend of comfort and convenience.

Step inside to discover generously sized bedrooms, including a Primary Bedroom with a perfectly sized ensuite, providing ample space for relaxation and rejuvenation. The inviting living space is ideal for gatherings with loved ones, while the eat-in kitchen sets the stage for memorable moments and shared meals.

What sets this home apart is its freshness, boasting brand-new paint throughout the interior and a recently installed roof, ensuring both durability and peace of mind for years to come.

Conveniently located just moments away from Fort Cavazos, this residence is an ideal choice for military families seeking proximity to the base. Furthermore, its position off Clear Creek Road offers easy access to local amenities, including shopping centers and restaurants, while preserving the tranquility of its suburban surroundings.

Don't miss the opportunity to experience the comfort and convenience of 5212 Donegal Bay – your new home sweet home awaits!



Built in 2005

Essential Information

MLS® #	530506
Price	\$218,900
Bedrooms	3
Bathrooms	2.00
Full Baths	2
Square Footage	1,317
Acres	0.12
Year Built	2005
Type	Residential
Sub-Type	Single Family
Style	Traditional
Status	Active

Community Information

Address	5212 Donegal Bay Court
Subdivision	Bridgewood Add
City	Killeen
County	Bell
State	Texas
Zip Code	76549

Amenities

Utilities	Cable Available, Electricity Available, Fiber Optic Available, High Speed Internet Available, Trash Collection Public
Features	None
# of Garages	2
View	None

Interior

Interior	Ceramic Tile, Laminate
Appliances	Dishwasher, Electric Range, Refrigerator, Some Electric Appliances, Microwave
Heating	Central
Cooling	Central Air, Electric
Fireplaces	None
# of Stories	1

Stories One

Exterior

Exterior Features Covered Patio, Porch
Lot Description 44x119x46x119
Roof Composition, Shingle
Construction Masonry
Foundation Slab

School Information

District Killeen ISD

Additional Information

Date Listed January 18th, 2024
Days on Market 155

Listing Details

Listing Office All City Real Estate Ltd. Co

The information being provided by the Central Texas MLS is exclusively for consumers' personal, non-commercial use, and it may not be used for any purpose other than to identify prospective properties consumers may be interested in purchasing. The data is deemed reliable but is not guaranteed accurate by the MLS.