

\$4,836,700 - 7807 Old Lockhart Highway, Buda

MLS® #532156

\$4,836,700

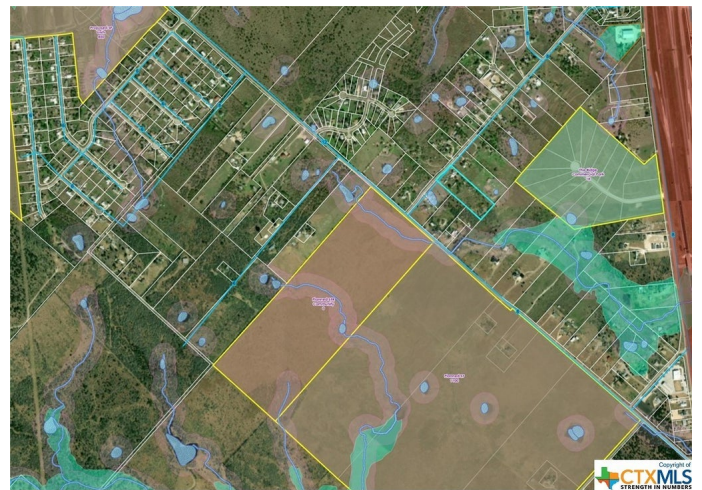
0 Bedroom, 0.00 Bathroom,
Land on 56.26 Acres

N/A, Buda, Texas

15-56 acres positioned between 45 and 130 in Buda, this property is located in a growing area surrounded by single-family development projects. Recent infrastructure upgrades include a 16" water line along the front of the property with 2 meters, 2 independent distribution electric lines, one 3-phase primary at the road, and 1 single-phase on the west side of the property with both being metered. There is currently a proposed sewer line and a road widening expansion. The property also includes solar panels and an electric gate entrance. The majority of the 15 acres is cleared and level, and it benefits from an agricultural exemption, making it an attractive option for a buy and hold. This property is in the Mustang Ridge ETJ with no known restrictions or zoning. It also includes a residential home. Jorgenson Group has 15 acres and two additional tracts of 20 acres each available for an assemblage. Property lies solely in Travis County. Other municipal entities do not apply.

Essential Information

MLS® #	532156
Price	\$4,836,700
Bathrooms	0.00
Acres	56.26
Type	Land
Sub-Type	Acreage



Status Pending

Community Information

Address 7807 Old Lockhart Highway
Subdivision N/A
City Buda
County Travis
State Texas
Zip Code 78610

Amenities

Utilities Electricity Available
Features None
View Pond

School Information

District Del Valle ISD
Elementary Creedmoor Elementary
Middle John P. Ojeda Middle School
High Del Valle School

Additional Information

Date Listed January 26th, 2024
Days on Market 187

Listing Details

Listing Office Keller Williams Realty NW

The information being provided by the Central Texas MLS is exclusively for consumers' personal, non-commercial use, and it may not be used for any purpose other than to identify prospective properties consumers may be interested in purchasing. The data is deemed reliable but is not guaranteed accurate by the MLS.