

# \$286,025 - 7106 Gilbert Drive, Killeen

MLS® #542739

## \$286,025

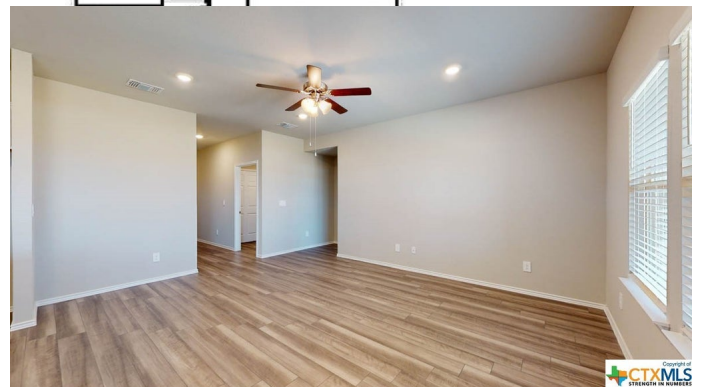
4 Bedroom, 2.00 Bathroom, 1,665 sqft  
Residential on 0.35 Acres

Mitchell Farms, Killeen, Texas

The Fargo plan is a one-story home featuring 4 bedrooms, 2 baths, and 2 car-garage. The long foyer leads to the open concept kitchen and breakfast area. The kitchen includes a breakfast bar with beautiful counter tops, stainless steel appliances, corner pantry and opens to the family room. Bedroom 1 features a sloped ceiling and attractive bathroom with dual vanities, water closet and spacious walk-in closet. The standard rear covered patio is located off the breakfast area. Youâ€™™ll enjoy added security in your new DR Horton home with our Home is Connected features. Using one central hub that talks to all the devices in your home, you can control the lights, thermostat and locks, all from your cellular device. DR Horton also includes an Amazon Echo Dot to make voice activation a reality in your new Smart Home on select homes. With D.R. Horton's simple buying process and ten-year limited warranty, there's no reason to wait. (Prices, plans, dimensions, specifications, features, incentives, and availability are subject to change without notice obligation)



Express  
HOMES



Built in 2024

## Essential Information

MLS® #	542739
Price	\$286,025
Bedrooms	4

Bathrooms	2.00
Full Baths	2
Square Footage	1,665
Acres	0.35
Year Built	2024
Type	Residential
Sub-Type	Single Family
Style	Other
Status	Pending

### **Community Information**

Address	7106 Gilbert Drive
Subdivision	Mitchell Farms
City	Killeen
County	Bell
State	Texas
Zip Code	76549

### **Amenities**

Utilities	Other, See Remarks
Features	Other, See Remarks, Street Lights
# of Garages	2
View	Other

### **Interior**

Interior	Vinyl
Appliances	Other, See Remarks
Heating	Central
Cooling	Central Air
Fireplaces	None
# of Stories	1
Stories	One

### **Exterior**

Exterior Features	Other, See Remarks
Roof	Composition, Shingle
Construction	Lap Siding
Foundation	Slab

### **School Information**

District	Killeen ISD
Elementary	Haynes Elementary School
Middle	Roy J Smith Middle School
High	Chaparral High School

### **Additional Information**

Date Listed	May 2nd, 2024
Days on Market	11
HOA Fees	50
HOA Fees Freq.	Monthly

### **Listing Details**

Listing Office	NextHome Tropicana Realty
----------------	---------------------------

The information being provided by the Central Texas MLS is exclusively for consumers' personal, non-commercial use, and it may not be used for any purpose other than to identify prospective properties consumers may be interested in purchasing. The data is deemed reliable but is not guaranteed accurate by the MLS.