

\$750,000 - 365 Meadow View Drive, Killeen

MLS® #543490

\$750,000

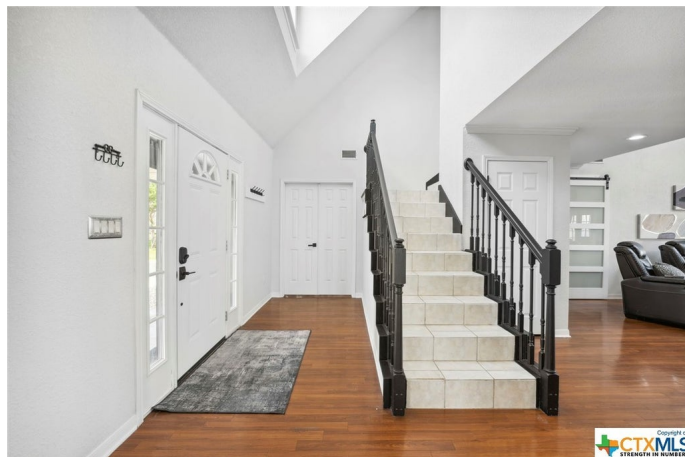
4 Bedroom, 4.00 Bathroom, 3,167 sqft
Residential on 5.00 Acres

Creek Place Sec 2b, Killeen, Texas

Just outside city limits, welcome to your dream retreat nestled in the heart of tranquility! This beautifully renovated ranch property offers a perfect blend of modern elegance and serene charm. The heart of the home boasts a stunning full kitchen remodel, featuring top-of-the-line appliances, sleek quartz countertops, and ample storage space for all your culinary adventures. Each bathroom has been meticulously remodeled, offering luxurious finishes and a spa-like ambiance for your relaxation and rejuvenation. Every corner thoughtfully redesigned to elevate your living experience including new light fixtures, barn doors, fresh paint inside & out, and a new A/C unit.

Step outside onto the expansive patio and take in the breathtaking views that stretch for miles. With a 20 ft overhang providing shade and comfort, this outdoor oasis is perfect for entertaining guests or simply unwinding. The brand new metal fence ensures privacy and security while maintaining the charm of the countryside.

For those seeking additional space for their hobbies or workouts, the property boasts a new 12 x 24 shed, ready to be transformed into your personal sanctuary. Plus, a fully insulated 40 x 8 shipping container awaits, equipped with a heat pump, security lighting, & electrical hookups, offering endless possibilities for your creative endeavors.



The spacious 3-car garage has been upgraded with new epoxy floors and features a brand new bathroom. Above the garage, a bonus room awaits, offering potential for a home office, studio, or additional living space. With its breathtaking views and serene surroundings, this property is more than just a home – it's a place where you can escape the hustle and bustle of everyday life and truly unwind. Schedule a viewing today and experience the beauty and tranquility of this exceptional property firsthand. Welcome home!

Built in 1995

Essential Information

MLS® #	543490
Price	\$750,000
Bedrooms	4
Bathrooms	4.00
Full Baths	4
Square Footage	3,167
Acres	5.00
Year Built	1995
Type	Residential
Sub-Type	Single Family
Style	Ranch
Status	Active

Community Information

Address	365 Meadow View Drive
Subdivision	Creek Place Sec 2b
City	Killeen
County	Bell
State	Texas
Zip Code	76549

Amenities

Utilities	Cable Available, High Speed Internet Available, Trash Collection Private
-----------	--

Features	None
Parking Spaces	3
Parking	Door-Multi, Garage, Garage Faces Side, Carport, Detached, Detached Carport, Oversized, RV Access/Parking
# of Garages	3
Garages	Garage Door Opener
View	None

Interior

Interior	Laminate, Tile, Combination
Appliances	Dishwasher, Electric Range, Electric Water Heater, Disposal, Oven, Refrigerator, Some Electric Appliances
Heating	Central, Fireplace(s)
Cooling	Central Air
Fireplace	Yes
# of Fireplaces	1
Fireplaces	Living Room, Wood Burning, Outside
# of Stories	2
Stories	Two

Exterior

Exterior Features	Covered Patio, Private Yard, Rain Gutters, Storage
Windows	Window Treatments
Roof	Metal
Construction	Brick Veneer, Masonry
Foundation	Slab

School Information

District	Killeen ISD
----------	-------------

Additional Information

Date Listed	May 9th, 2024
Days on Market	56

Listing Details

Listing Office	Keller Williams Realty Lone St
----------------	--------------------------------

The information being provided by the Central Texas MLS is exclusively for consumers' personal, non-commercial use, and it may not be used for any purpose other than to identify prospective properties consumers may be interested in purchasing. The data is deemed reliable but is not guaranteed accurate by the MLS.