

# \$279,000 - 6209 Blayney Drive, Killeen

MLS® #544341

## \$279,000

4 Bedroom, 3.00 Bathroom, 2,291 sqft  
Residential on 0.18 Acres

Bridgewood Add Ph II, Killeen, Texas

Welcome to your dream home! This spacious 4-bedroom, 3-bathroom residence offers 2,291 square feet of comfortable living space, perfect for a growing family. On the main level, you'll find one bedroom and a full bath, ideal for guests or multi-generational living. Upstairs, there are three additional bedrooms and a large loft area with a double vanity full bath, providing ample space for everyone. As you approach the home, a beautiful mature tree and a cozy front porch greet you.

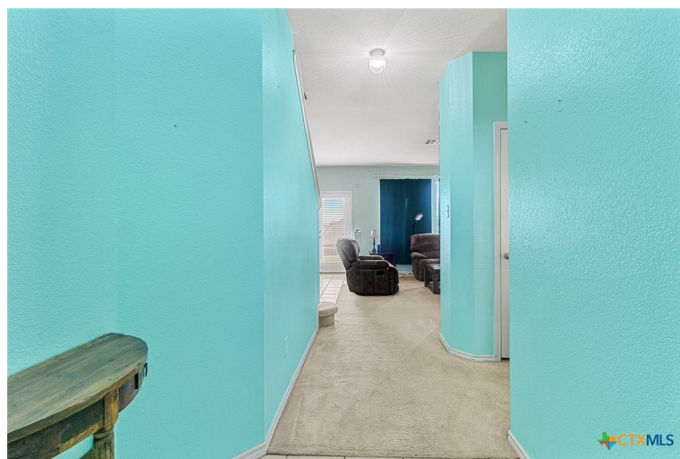
The heart of this home is its seamless flow between the kitchen, dining, and living areas. This open layout is perfect for family gatherings and entertaining friends. The backyard features a covered patio, offering a perfect spot for outdoor dining and activities. There's plenty of space for children to play and for family barbecues.

Located just minutes from Ft. Cavazos, this home is ideal for military families. It's also close to a variety of restaurants and shopping centers, ensuring you have everything you need within easy reach. This home combines comfort, style, and convenience, making it the perfect choice for your family. Don't miss the opportunity to make this beautiful house your new home!

Built in 2007

## Essential Information

MLS® # 544341



Price	\$279,000
Bedrooms	4
Bathrooms	3.00
Full Baths	3
Square Footage	2,291
Acres	0.18
Year Built	2007
Type	Residential
Sub-Type	Single Family
Style	Traditional
Status	Active

### **Community Information**

Address	6209 Blayney Drive
Subdivision	Bridgewood Add Ph II
City	Killeen
County	Bell
State	Texas
Zip Code	76549

### **Amenities**

Utilities	Cable Available, Electricity Available, High Speed Internet Available, Trash Collection Public, Water Available
Features	None, Gutter(s), Sidewalks
# of Garages	2
View	None

### **Interior**

Interior	Carpet, Ceramic Tile
Appliances	Convection Oven, Disposal, Plumbed For Ice Maker, Water Heater, Microwave
Heating	Central, Electric
Cooling	Central Air, Electric, 2 Units
Fireplaces	None
# of Stories	2
Stories	Two

### **Exterior**

Exterior Features	Covered Patio, Porch, Private Yard
-------------------	------------------------------------

Roof	Composition, Shingle
Construction	Brick, HardiPlank Type
Foundation	Slab

### **School Information**

District	Killeen ISD
Elementary	Fowler Elementary School
Middle	Roy J Smith Middle School
High	Shoemaker High School

### **Additional Information**

Date Listed	May 21st, 2024
-------------	----------------

### **Listing Details**

Listing Office	Elevate Texas Real Estate
----------------	---------------------------

The information being provided by the Central Texas MLS is exclusively for consumers' personal, non-commercial use, and it may not be used for any purpose other than to identify prospective properties consumers may be interested in purchasing. The data is deemed reliable but is not guaranteed accurate by the MLS.