

\$625,000 - 13413 Equestrian Cove, Austin

MLS® #544644

\$625,000

3 Bedroom, 2.00 Bathroom, 2,100 sqft
Residential on 0.14 Acres

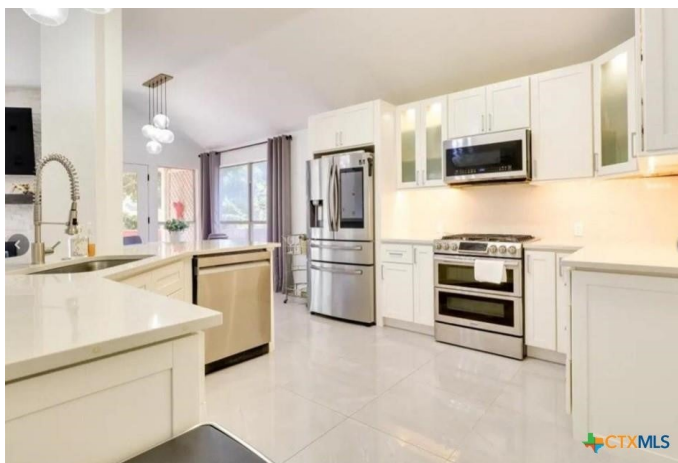
Scofield Farms Ph 8 Sec 1, Austin, Texas

If your looking for BRIGHT, MODERN and MOVE IN ready then this is the home for you! Whole house has been modernized in this single story home, while still preserving it's traditional Texas brick exterior! PRIME location just a stone throw from the Domain & excellent schools! Kitchen has been done with sleek white & glass front cabinets, quartz countertops & stainless appliances. Livingroom has big beautiful arch windows to compliment the fireplace and let in natural light! Built in dry bar with split faced wall, glass front cabinets & beverage fridge! Master bedroom is an owners private retreat with an upscale resort feel. Full wall custom closets and a clean, crisp feel that leads to a grand bath with a huge walk in shower with multiple shower heads for an immersive experience. All the lighting in this home was hand picked and truly shows better than a model home! Buy just the house, or love the look and buy it furnished...YES I said furnished! Washer, Dryer and fridge are also negotiable!

Built in 1995

Essential Information

MLS® #	544644
Price	\$625,000
Bedrooms	3
Bathrooms	2.00
Full Baths	2



Square Footage	2,100
Acres	0.14
Year Built	1995
Type	Residential
Sub-Type	Single Family
Style	Traditional
Status	Active

Community Information

Address	13413 Equestrian Cove
Subdivision	Scofield Farms Ph 8 Sec 1
City	Austin
County	Travis
State	Texas
Zip Code	78727

Amenities

Utilities	Electricity Available, Underground Utilities, Water Available
Features	None, Curbs, Sidewalks
Parking	Attached, Garage Faces Front, Garage
# of Garages	2
View	None

Interior

Interior	Tile
Appliances	Dishwasher, Disposal, Wine Refrigerator
Heating	Central, Natural Gas
Cooling	Central Air
Fireplace	Yes
# of Fireplaces	1
Fireplaces	Living Room
# of Stories	1
Stories	One

Exterior

Exterior Features	Deck, Rain Gutters
Roof	Composition, Shingle
Construction	Brick
Foundation	Slab

School Information

District	Pflugerville ISD
Elementary	Northwest Elementary School
Middle	Westview Middle School
High	John B. Connally High School

Additional Information

Date Listed	May 20th, 2024
Days on Market	50
HOA Fees	36

Listing Details

Listing Office	Realty Texas LLC
----------------	------------------

The information being provided by the Central Texas MLS is exclusively for consumers' personal, non-commercial use, and it may not be used for any purpose other than to identify prospective properties consumers may be interested in purchasing. The data is deemed reliable but is not guaranteed accurate by the MLS.