

\$241,470 - 7009 Gilbert Drive, Killeen

MLS® #547906

\$241,470

3 Bedroom, 2.00 Bathroom, 1,263 sqft
Residential on 0.35 Acres

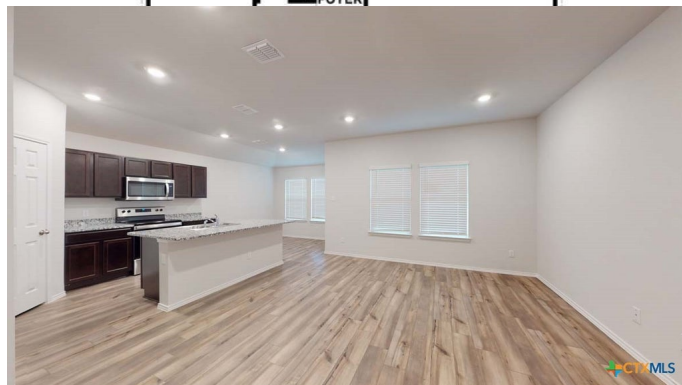
Mitchell Farms, Killeen, Texas

The Ashburn is a single-story, 3-bedroom, 2-bathroom home features approximately 1,263 square feet of living space. The entry opens to the secondary bedrooms and bath with hall linen closet. The kitchen includes a breakfast bar and corner pantry and opens to family room. The main bedroom, bedroom 1, offers privacy along with attractive bathroom features such as dual vanities and walk-in closet. The standard covered patio is located off the dining area. Additional finishes include granite countertops and stainless-steel appliances. Youâ€™™ll enjoy added security in your new D.R. Horton home with our Home is Connected features. Using one central hub that talks to all the devices in your home, you can control the lights, thermostat and locks, all from your cellular device. With D.R. Horton's simple buying process and ten-year limited warranty, there's no reason to wait! (Prices, plans, dimensions, specifications, features, incentives, and availability are subject to change without notice obligation)



D.R. HORTON
America's Builder

THE ASHBURN



Built in 2024

Essential Information

MLS® #	547906
Price	\$241,470
Bedrooms	3
Bathrooms	2.00
Full Baths	2

Square Footage	1,263
Acres	0.35
Year Built	2024
Type	Residential
Sub-Type	Single Family
Style	Other
Status	Pending

Community Information

Address	7009 Gilbert Drive
Subdivision	Mitchell Farms
City	Killeen
County	Bell
State	Texas
Zip Code	76549

Amenities

Utilities	Other, See Remarks
Features	Other, See Remarks, Street Lights
# of Garages	2
View	Other

Interior

Interior	Tile
Appliances	Other, See Remarks
Heating	Central
Cooling	Central Air
Fireplaces	None
# of Stories	1
Stories	One

Exterior

Exterior Features	Other, See Remarks
Roof	Composition, Shingle
Construction	Masonry, Steel
Foundation	Slab

School Information

District	Killeen ISD
----------	-------------

Elementary	Haynes Elementary School
Middle	Roy J Smith Middle School
High	Chaparral High School

Additional Information

Date Listed	June 17th, 2024
Days on Market	16
HOA Fees	50
HOA Fees Freq.	Monthly

Listing Details

Listing Office	NextHome Tropicana Realty
----------------	---------------------------

The information being provided by the Central Texas MLS is exclusively for consumers' personal, non-commercial use, and it may not be used for any purpose other than to identify prospective properties consumers may be interested in purchasing. The data is deemed reliable but is not guaranteed accurate by the MLS.